

TYPE "F"  
Door Operating Mechanism

# TYPE "F"

The Miner Type "F" door operating mechanism is specifically designed to provide fast, reliable discharge of wood chips from open top hopper cars. With simple, safe door operation and large, unobstructed door openings, the Type "F" provides quick unloading and turnaround for optimum equipment utilization.

- ◀ One person safe operation from either side of the car
- ◀ Faster unloading with large, unobstructed door openings
- ◀ Positive over center secure locking system
- ◀ Tight seals prevent leakage

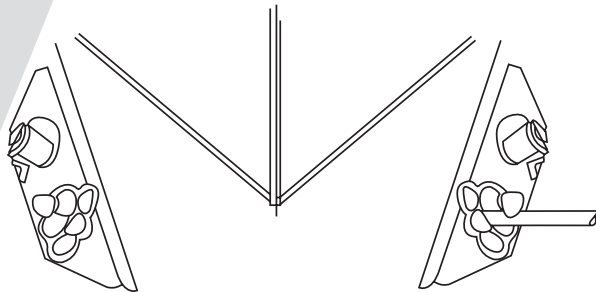
Simple. Reliable. Proven.



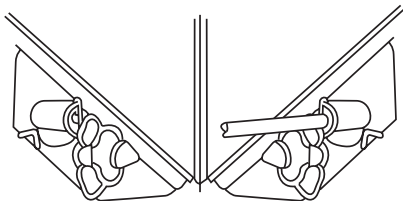
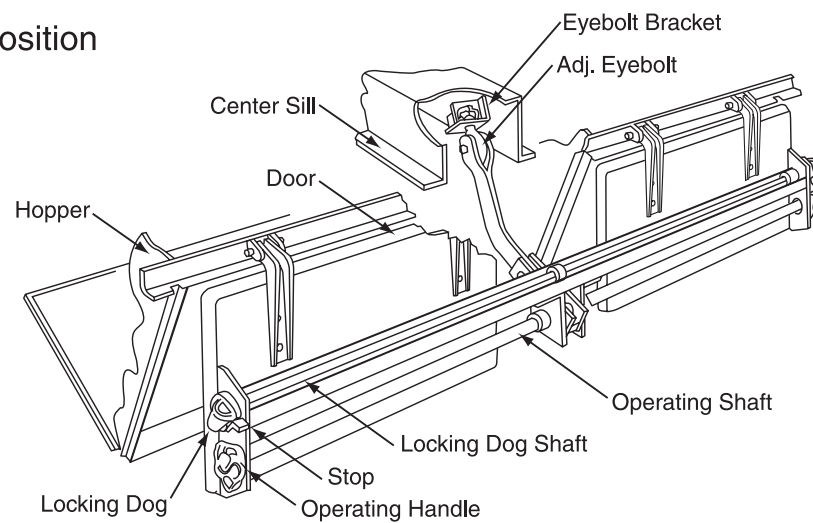
PERFECTING RAILCAR PERFORMANCE

# TYPE "F"

## DOOR OPERATING MECHANISM



Open Position



Closed Position

