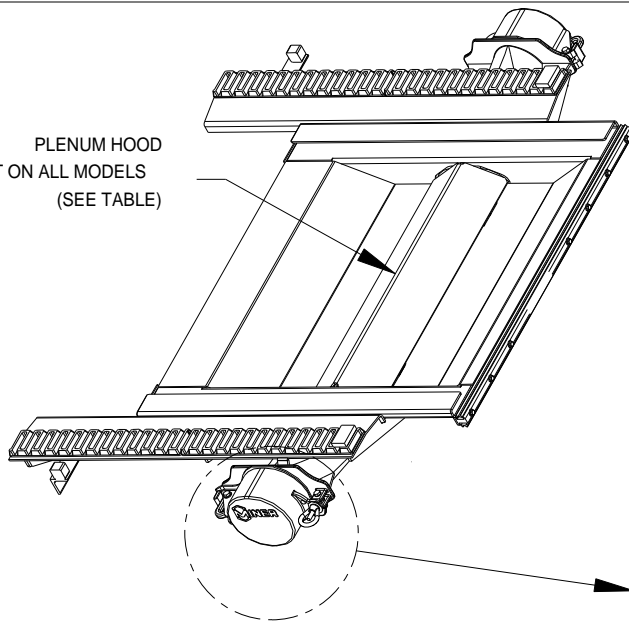




1200 EAST STATE STREET

GENEVA, IL 60134

PLENUM HOOD
NOT ON ALL MODELS
(SEE TABLE)

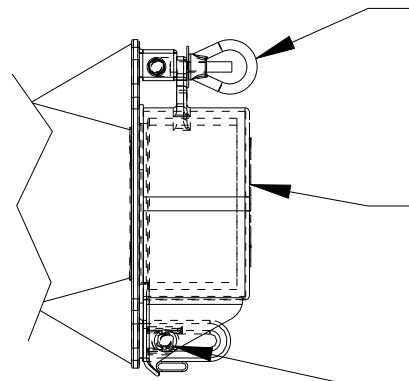


27 x 30 SaniLOK Plenum Chamber
See Table For P/N
Arrangement Dwg. M-140-50

- P30000431 SWING BOLT
- P30000436 EYE NUT
- P30000435 WASHER
- P30000437 BOLT
- P30000412 NYLOCK NUT

- MKE10241 CAP
- MKE10242 GASKET

- P30000437 BOLT
- P30000410 WASHER
- P30000434 WELD NUT



PLENUM NUMBER	FRAME MAT'L	PLENUM HOOD
MKE10268	SS	N
MKE10291	SS	P10245010
MKE10271	HRS	N
MKE10292	HRS	P10292003

HARDWARE FOR CAP



FLAT WASHER
P30000410
(1/CAP, 2/PLENUM)
3/8"



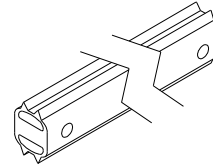
FLAT WASHER
P30000435
(1/CAP, 2/PLENUM) 3/8"
X 1-1/2"



WELD NUT
P30000434
(1/CAP,
2/PLENUM)
3/8-16

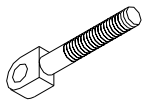


NYLOCK NUT
P30000412
(1/CAP,
2/PLENUM)
3/8-16

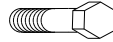


PLENUM FRONT SEAL -
MKE10248-3,
(1/PLENUM)
9 HOLES, 38-1/4" LONG

- HARDWARE REQUIRED
(9 EACH):
- P10209003 SLEEVE
 - P30000205 BOLT
 - P30000203 LOCK NUT
 - P90000209 WASHER



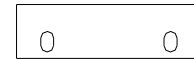
SWING BOLT
P30000431
(1/CAP, 2/PLENUM)
3/8-16



BOLT
P30000437
(2/CAP, 4/PLENUM)
3/8-16 X 1-3/4"

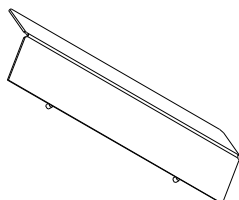


EYE NUT
P30000436
(1/CAP, 2/PLENUM)
3/8-16

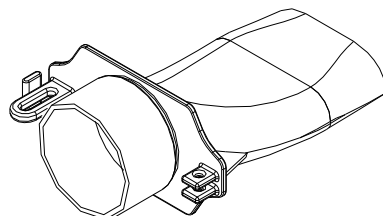


REAR PLENUM SEAL
P10268003
(2/PLENUM)
4-1/2" LONG

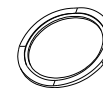
- HARDWARE REQUIRED
(2 EACH/SEAL):
- P30000207 BOLT
 - P30000203 LOCK NUT
 - P90000218 WASHER



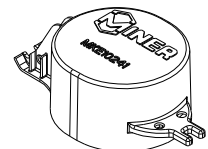
PLENUM HOOD ASS'Y
W/HINGES
(SEE TABLE)
(1/PLENUM)



PLENUM TUBE
MKE10240
(2/PLENUM)



GASKET
MKE10242
(2/PLENUM)



PIVOT CAP
MKE10241
(2/PLENUM)