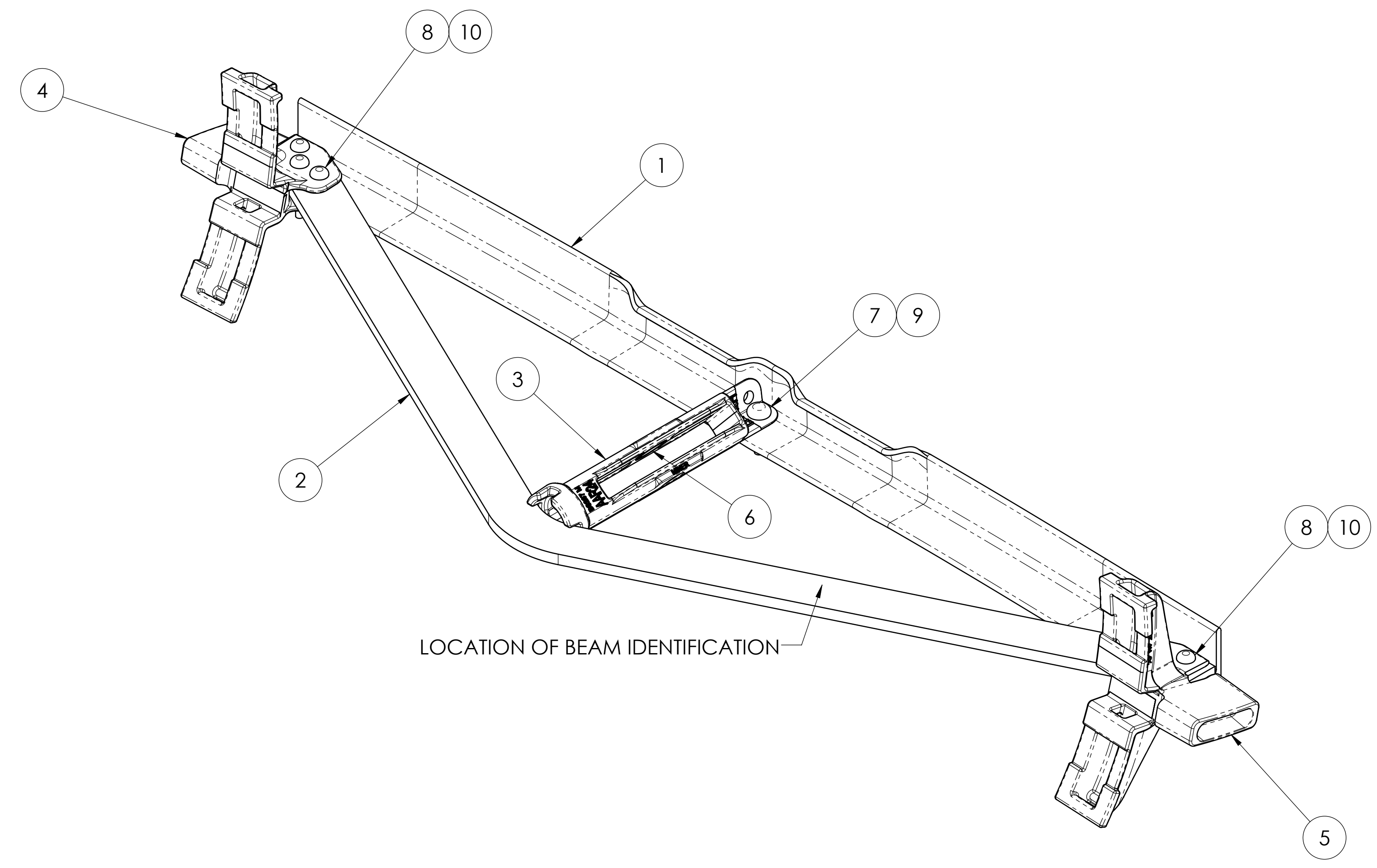
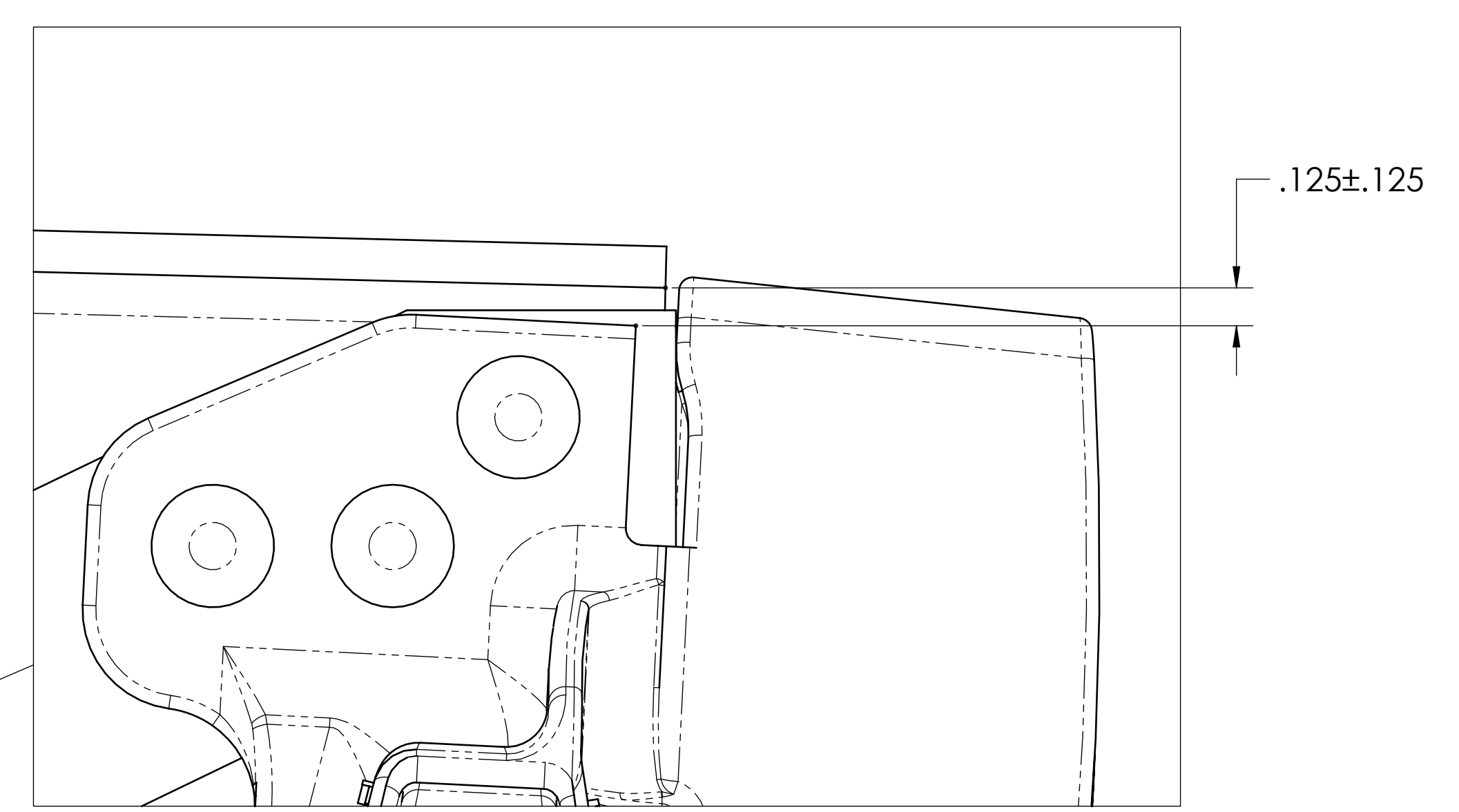
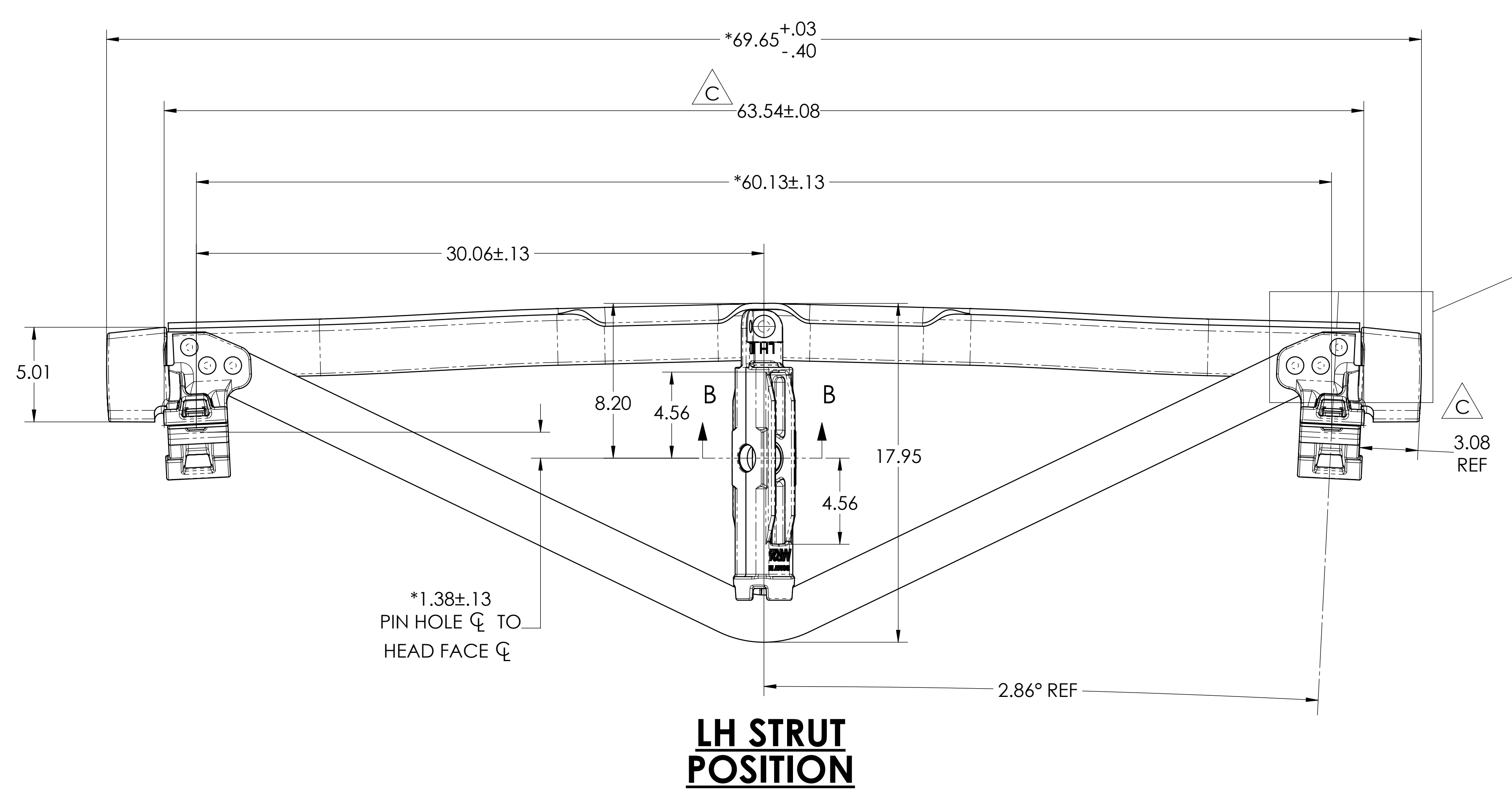


ITEM	QTY	PART NUMBER	DESCRIPTION	DRAWING NUMBER
1	1	B3313	COMPRESSION MEMBER	B3313
2	1	B3236	TENSION BAR	B3236
3	1	BS267RM	#18/24 REVERSIBLE STRUT	BS267RM
4	1	BH400	UNIT BRAKE HEAD, FOR COMP SHOES	BH400
5	1	BH401	UNIT BRAKE HEAD, FOR COMP SHOES	BH401
6	2	BS369	BUSHING FOR #24 STRUT	BS369
7	1	BF2008 ^B	PIN, HUCK, 5/8"	BFC2
8	6	BF1624 ^B	PIN, HUCK, 1/2"	BFC1
9	1	BC0520 ^B	COLLAR, 5/8"	BFC2
10	6	BC0816 ^B	COLLAR, 1/2"	BFC1

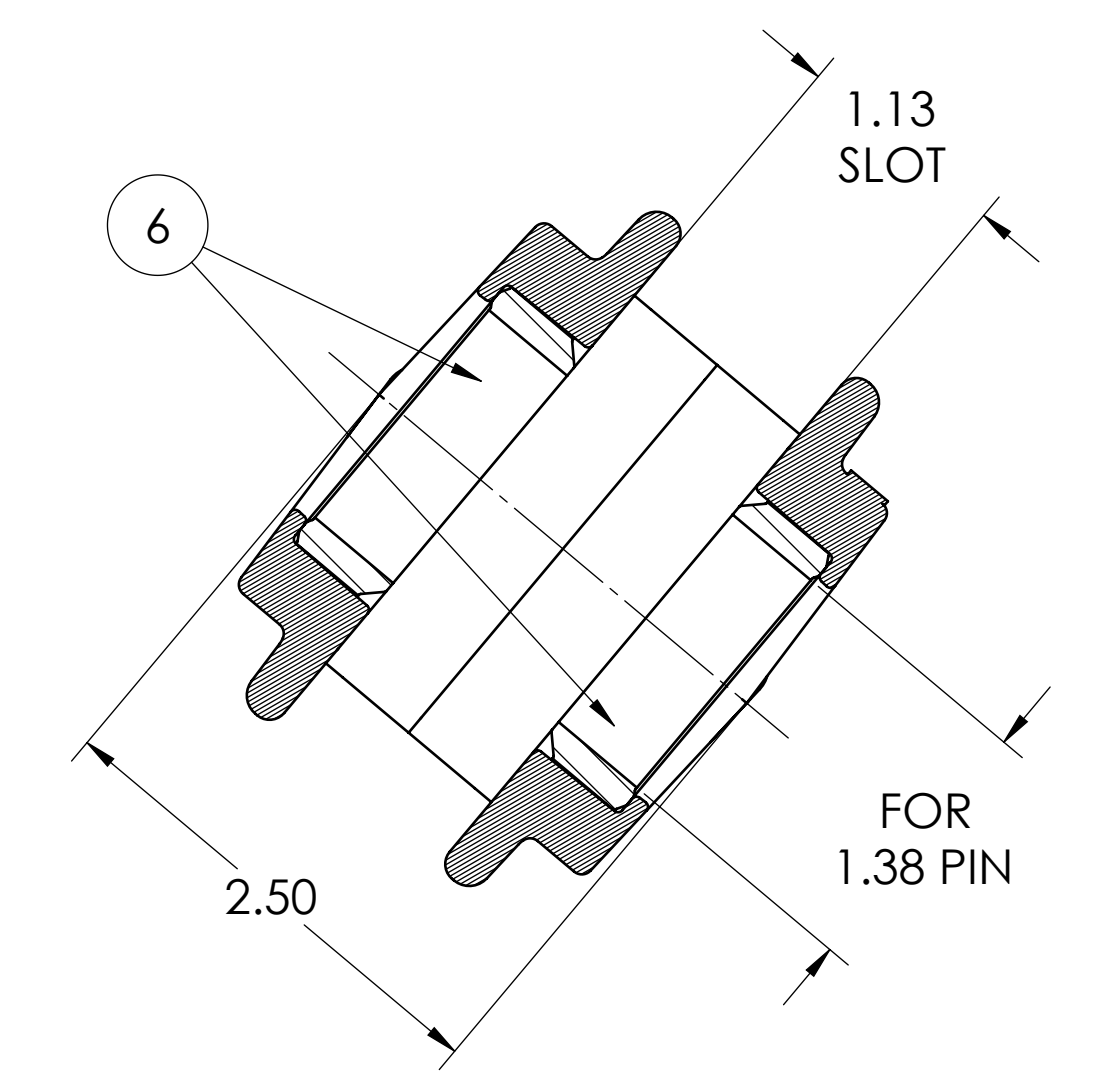
ZONE	REV	REVISIONS				
		DESCRIPTION	BY	CHKD BY	ECN	DATE
	A	INITIAL RELEASE	-	-	-	-
A2, H12, J11	B	REMOVED PAINT SPEC E4450 FROM NOTES. ADDED P/N'S TO NOTES. UPDATED HUCK AND COLLAR P/N'S. REMOVED PATENT NUMBER	RC	JC	2901	7/14/2021
A2, D11, E5, F7	C	63.54 WAS 63.61. ADDED 3.08 REF. 103 LBS. WAS 98.73 LBS. RH STRUT POSITION WAS SHOWING LH STRUT POSITION	RC	JC	2106	9/9/2021



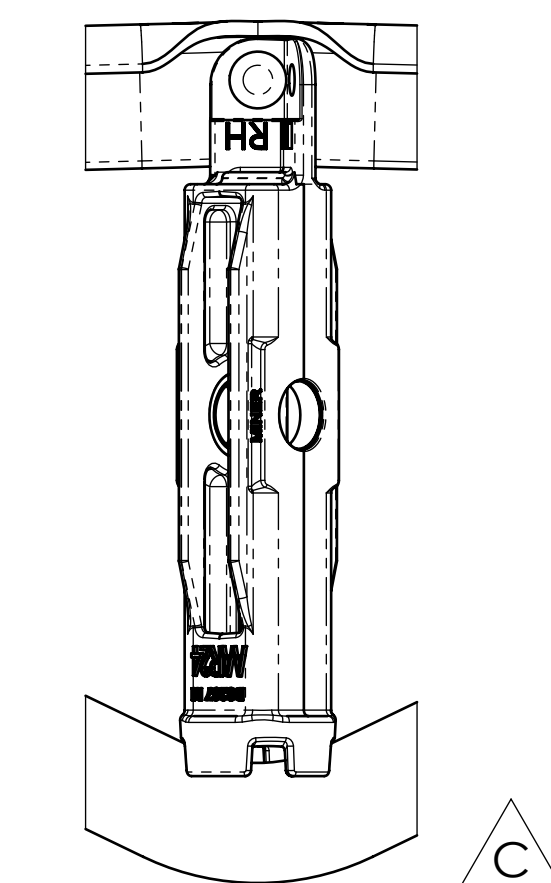
NOTES:
^B 1. P/N'S: BB824LH - LEFT HAND, BB824RH - RIGHT HAND
 2. * DENOTES A CRITICAL DIMENSION
 3. FOR AAR REQUIREMENTS, REF SECTION E, S-344
 4. BEAM SUPPLIED WITH (3) RIVETS PER BRAKE HEAD
 5. MARKING: (CLEARLY LEGIBLE) .38 HIGH X .03 DEEP
 090304066
 S08
 09 = YEAR (2 PLCS)
 030 = JULIAN DATE (3 PLCS)
 4066 = BEAM COUNT (4 PLCS)
 S08 = DENOTES SERIES 2008



DETAIL A
SCALE 1:1

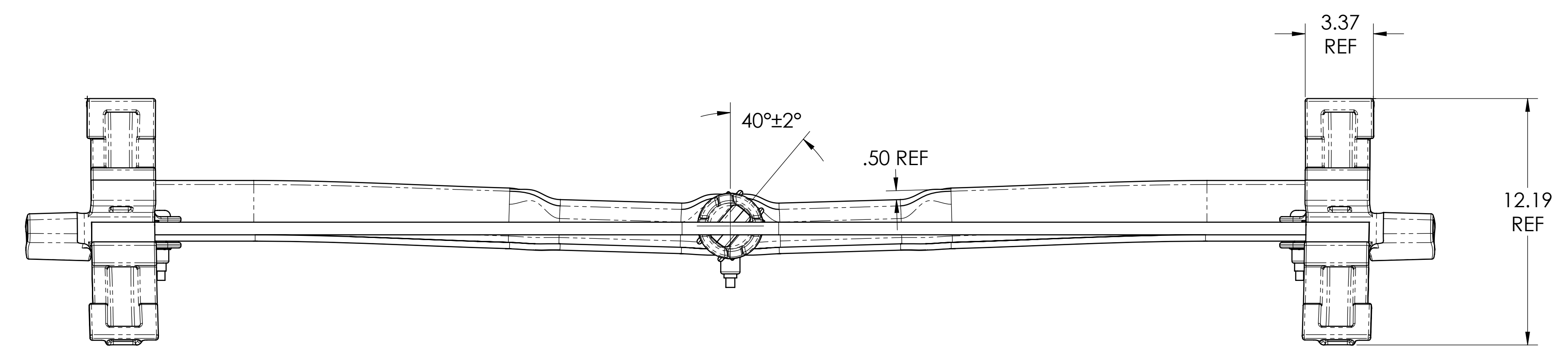


SECTION B-B
SCALE 1:1



RH STRUT
POSITION

LH STRUT
POSITION



REF THICKNESS OF
END EXTENSION:
1.347 MIN @ EDGE
1.411 MIN @ 1.00 FROM EDGE
1.547 MAX @ 3.034 FROM EDGE

THIS DRAWING IS THE PROPERTY OF MINER ENTERPRISES INC. WHO CLAIMS PROPRIETARY RIGHTS IN THE MATERIAL. DISCLOSED. IT IS ISSUED IN CONFIDENCE FOR ENGINEERING INFORMATION ONLY AND MAY NOT BE COPIED OR USED FOR MANUFACTURE OF ANYTHING SHOWN WITHOUT PERMISSION FROM MINER ENTERPRISES INC. COPYRIGHT MINER ENTERPRISES INC.

RELEASED FOR PRODUCTION

UNLESS OTHERWISE SPECIFIED TOLERANCES AS FOLLOWS
 X.XX ± 0.06 ANGLES ± 1°
 X.XXX ± 0.031 MM ± 1mm
 (X.XX) CRITICAL / INSPECTION

MINER
 1200 EAST STATE STREET GENEVA, IL 60134

TITLE: #24 UNIT BRAKE BEAM
 AAR CERT. NO. 201

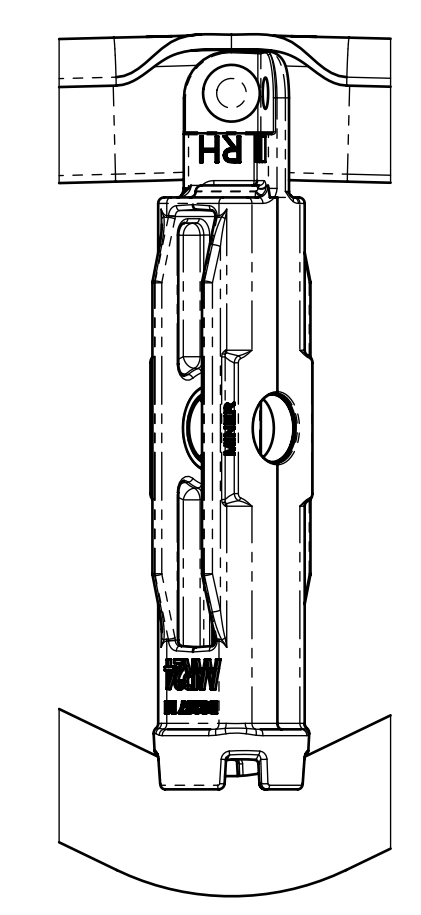
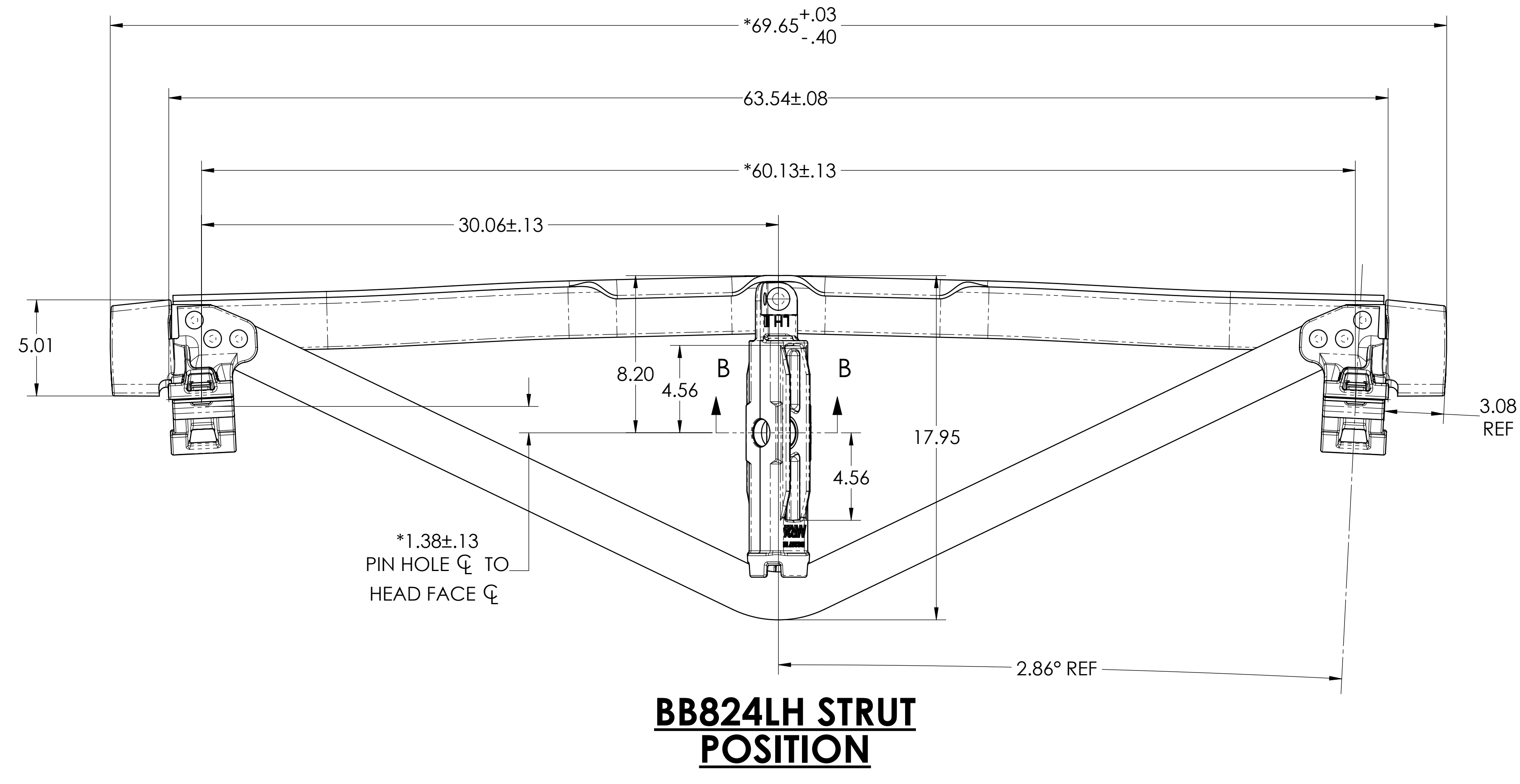
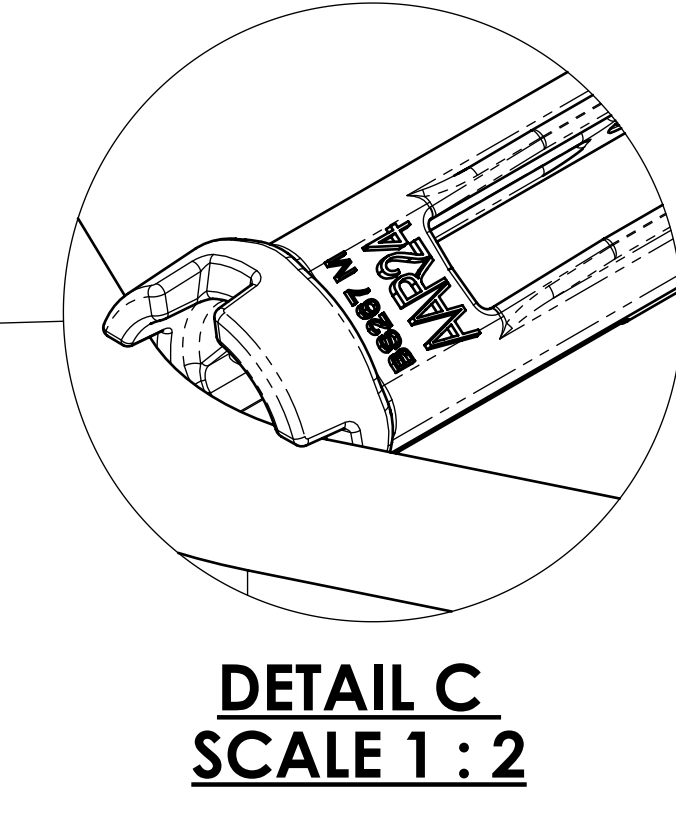
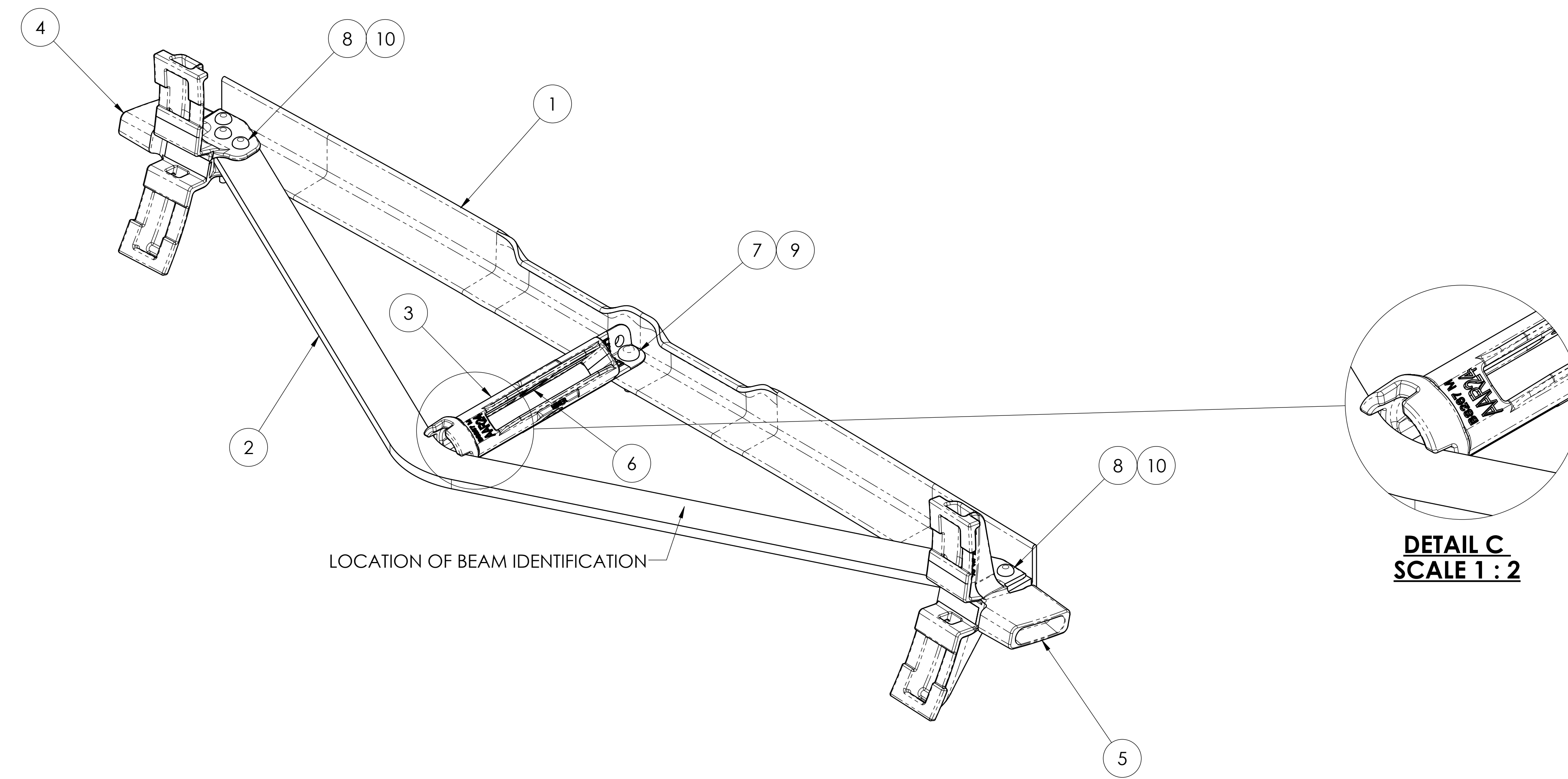
PRN: SEE NOTES
 WEIGHT: 103 LBS.
 MATERIAL: SEE BOM

REFERENCE: SCALE: 1:4
 MODELER: RC
 DETAILED BY: RC
 APPROVED BY: JC
 DATE: 3/19/2009
 DWG SIZE: DRAWING NO. REV.

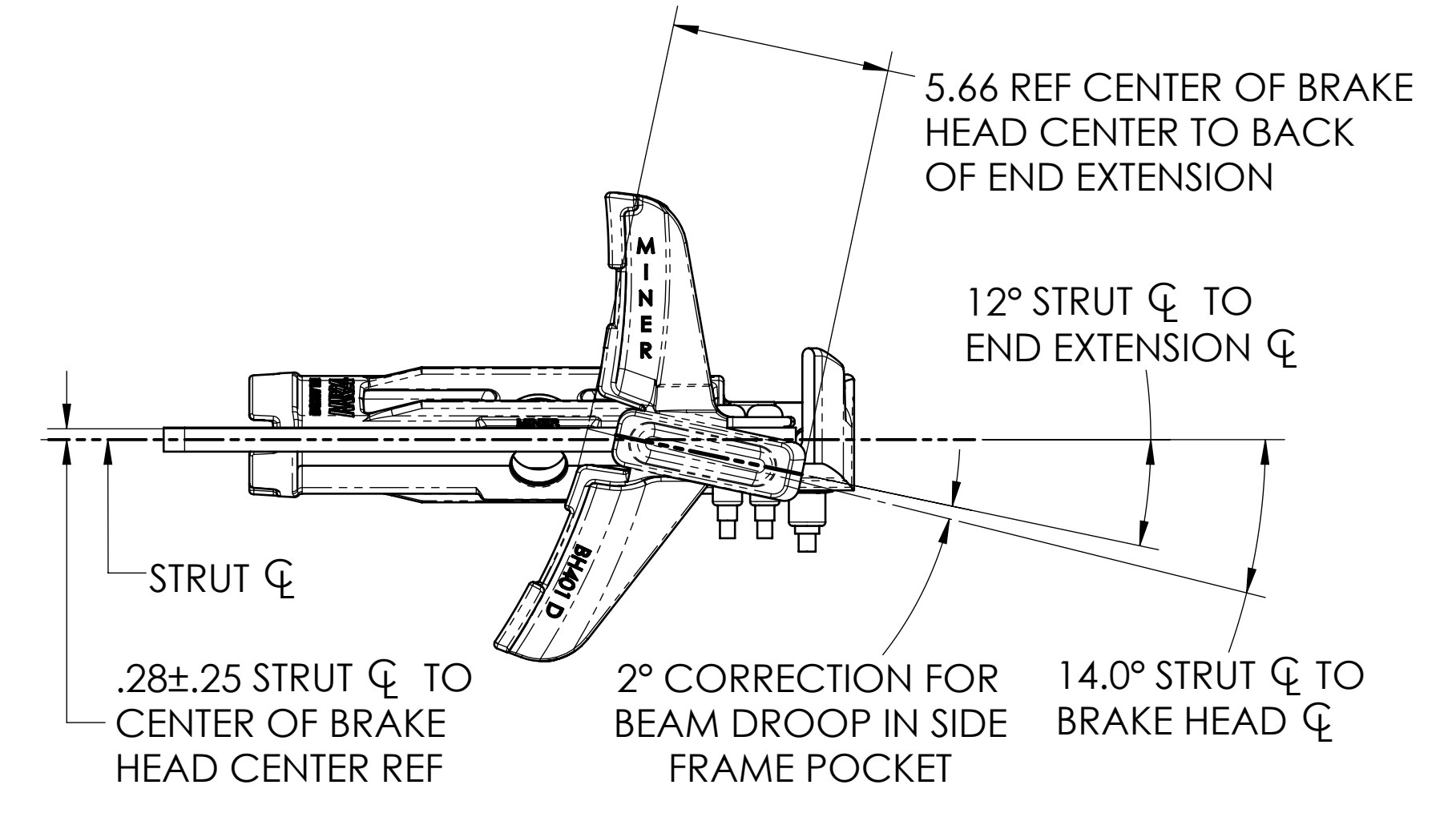
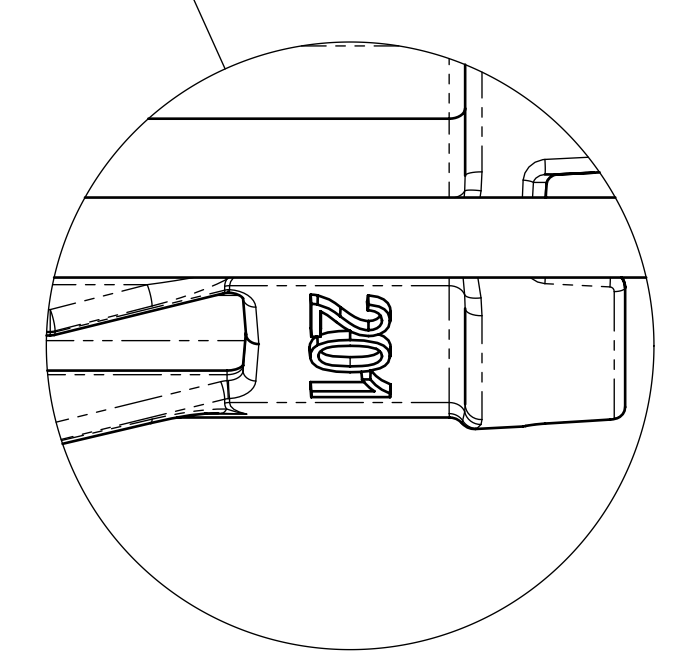
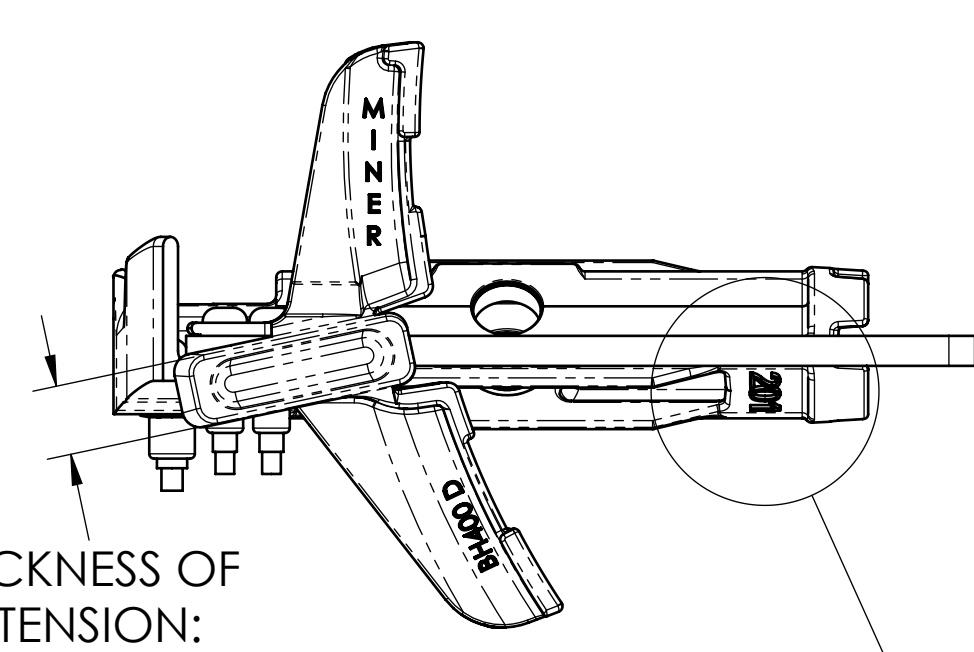
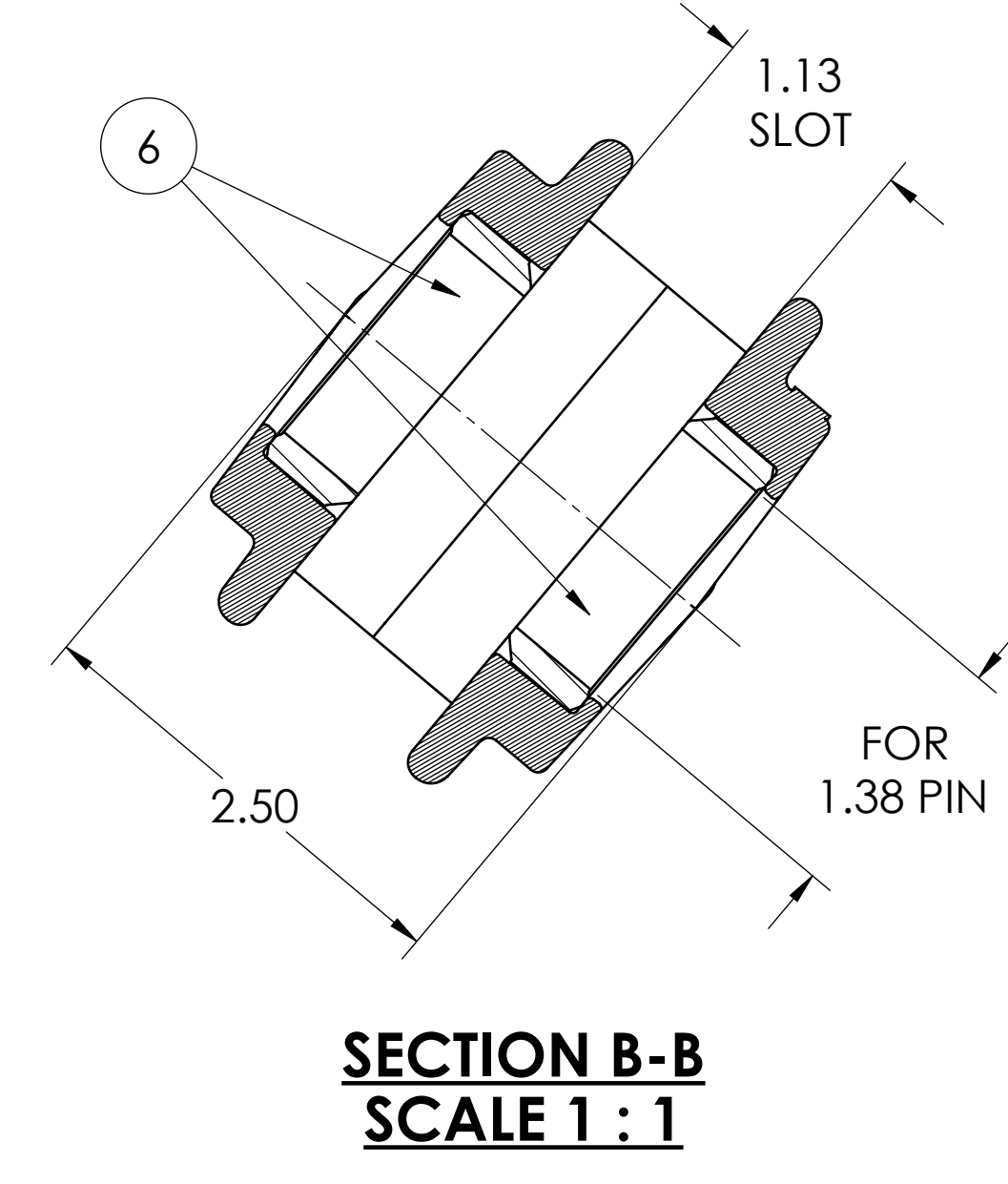
SHEET 1 OF 2
E BB824 **C**

ITEM	QTY	PART NUMBER	DESCRIPTION	DRAWING NUMBER
1	1	B3313	COMPRESSION MEMBER	B3313
2	1	B3236	TENSION BAR	B3236
3	1	BS267RM	#18/24 REVERSIBLE STRUT	BS267RM
4	1	BH400	UNIT BRAKE HEAD, FOR COMP SHOES	BH400
5	1	BH401	UNIT BRAKE HEAD, FOR COMP SHOES	BH401
6	2	BS369	BUSHING FOR #24 STRUT	BS369
7	1	BF2008	PIN, HUCK, 5/8"	BFC2
8	6	BF1624	PIN, HUCK, 1/2"	BFC1
9	1	BC0520	COLLAR, 5/8"	BFC2
10	6	BC0816	COLLAR, 1/2"	BFC1

- NOTES:
1. P/N'S: BB824LH - LEFT HAND, BB824RH - RIGHT HAND
2. * DENOTES A CRITICAL DIMENSION
3. MEETS AAR REQUIREMENTS, REF SECTION E, S-344
4. BEAM SUPPLIED WITH (3) RIVETS PER BRAKE HEAD
5. MARKING: (CLEARLY LEGIBLE) .38 HIGH X .03 DEEP
090304066
S08
09 = YEAR (2 PLCS)
030 = JULIAN DATE (3 PLCS)
4066 = BEAM COUNT (4 PLCS)
S08 = DENOTES SERIES 2008



BB824LH STRUT POSITION



CUSTOMER DRAWING

THIS DRAWING IS THE PROPERTY OF MINER ENTERPRISES INC. WHO CLAIMS PROPRIETARY RIGHTS IN THE MATERIAL DISCLOSED. IT IS ISSUED IN CONFIDENCE FOR ENGINEERING INFORMATION ONLY AND MAY NOT BE COPIED OR USED FOR MANUFACTURE OF ANYTHING SHOWN WITHOUT PERMISSION FROM MINER ENTERPRISES INC. COPYRIGHT MINER ENTERPRISES INC.

RELEASED FOR PRODUCTION

UNLESS OTHERWISE SPECIFIED TOLERANCES AS FOLLOWS
X.XX ± 0.06 ANGLES ± 1°
X.XXX ± 0.031 MM ± 1mm
(X.XX) CRITICAL / INSPECTION

MINER
1200 EAST STATE STREET GENEVA, IL 60134

TITLE: #24 UNIT BRAKE BEAM
AAR CERT. NO. 201

PRN: SEE NOTES MATERIAL: SEE BOM
WEIGHT: 103 Lbs.
DEVICE: BRAKE BEAM

REFERENCE: SCALE: 1:4
DATE: 3/19/2009

DWG SIZE: DRAWING NO. BB824
REV. C