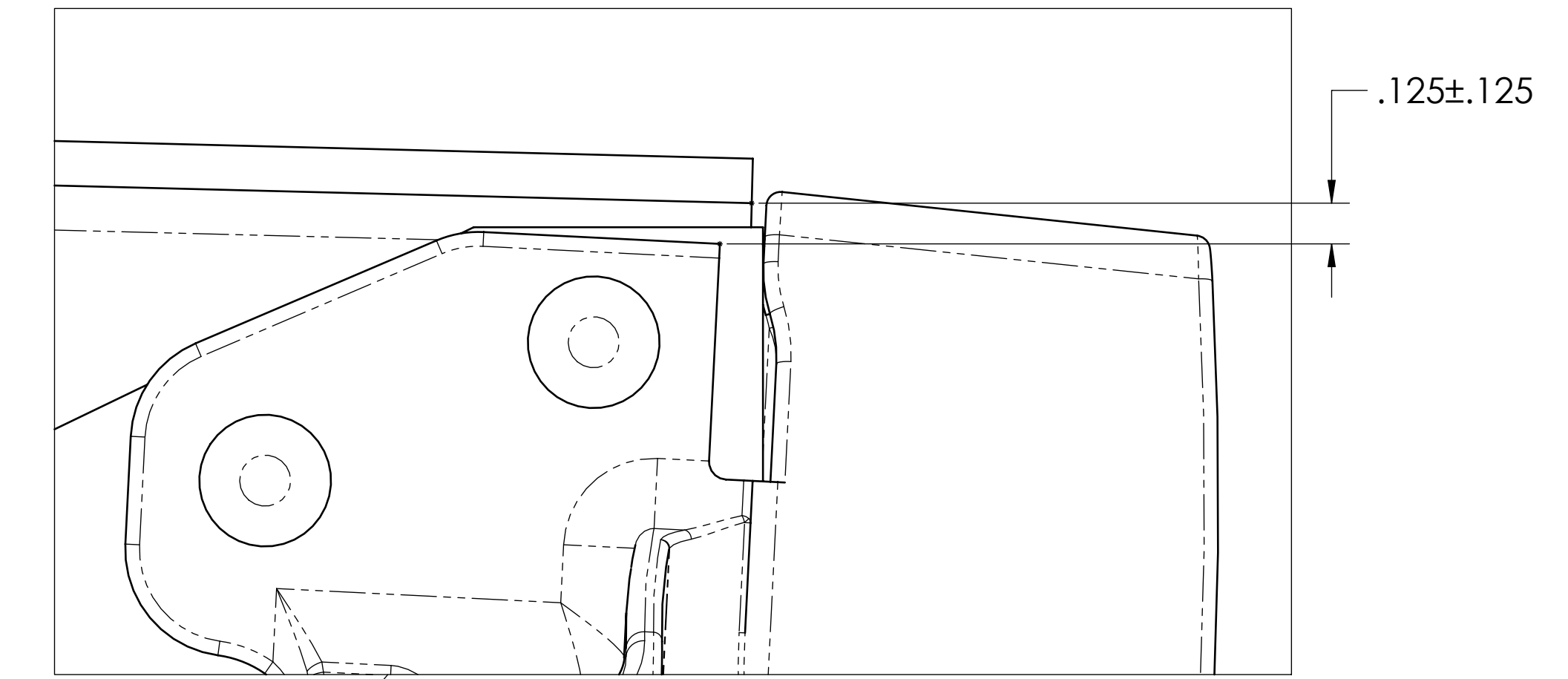
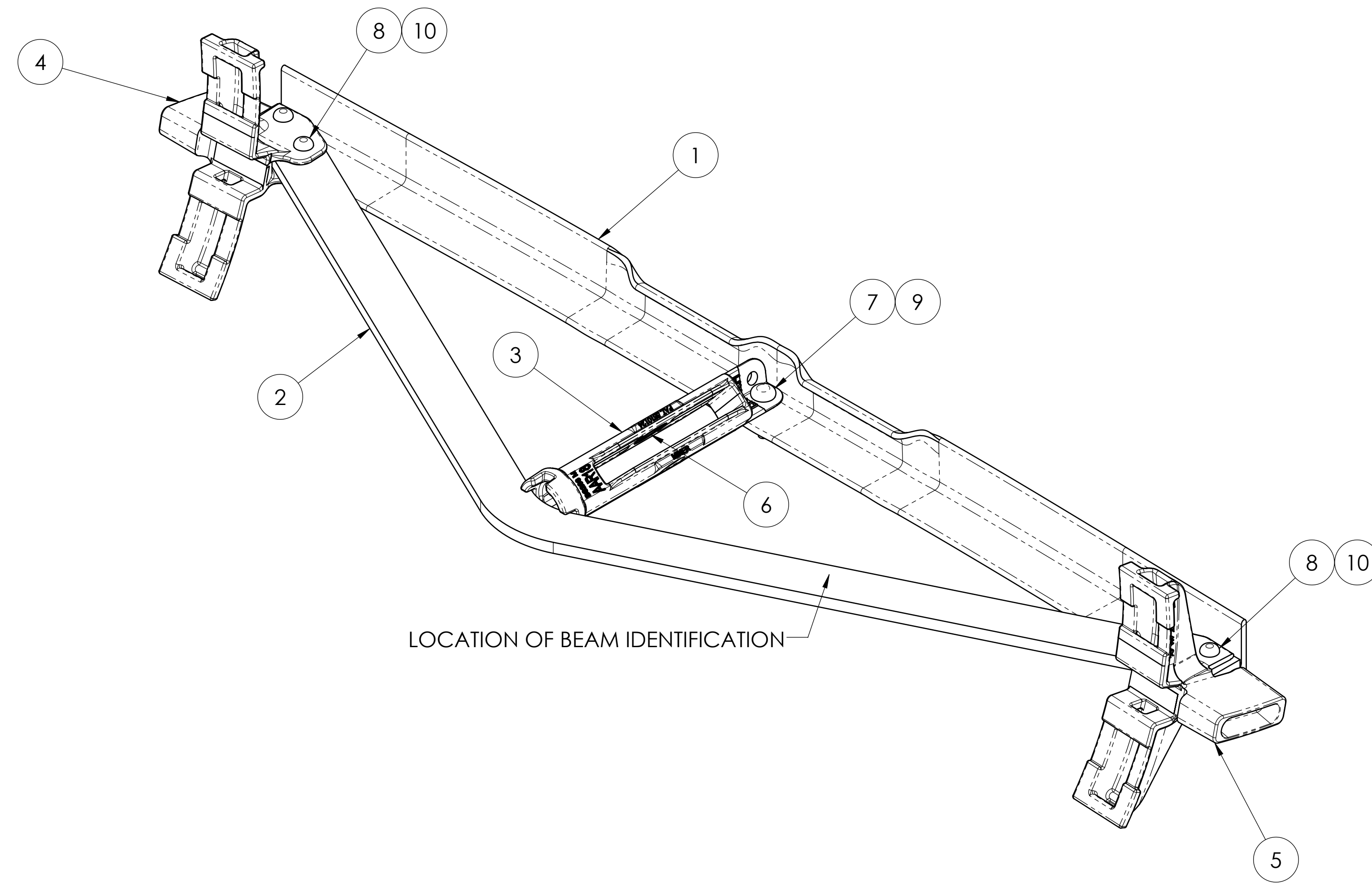


ITEM	QTY	PART NUMBER	DESCRIPTION	DRAWING NUMBER
1	1	B3313	COMPRESSION MEMBER	B3313
2	1	B3236	TENSION BAR	B3236
3	1	BS268RM	#18/24 REVERSIBLE STRUT	BS267RM
4	1	BH400	UNIT BRAKE HEAD, FOR COMP SHOES	BH400
5	1	BH401	UNIT BRAKE HEAD, FOR COMP SHOES	BH401
6	2	BS370	BUSHING FOR #18 STRUT	BS370
7	1	BF2008 \triangle_B	PIN, HUCK, 5/8"	BFC2
8	4	BF1624 \triangle_B	PIN, HUCK, 1/2"	BFC1
9	1	BC0520 \triangle_B	COLLAR, 5/8"	BFC2
10	4	BC0816 \triangle_B	COLLAR, 1/2"	BFC1

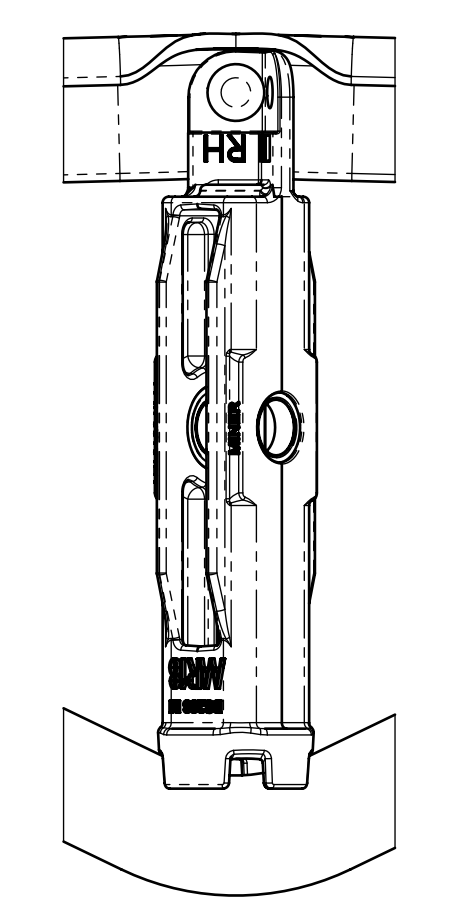
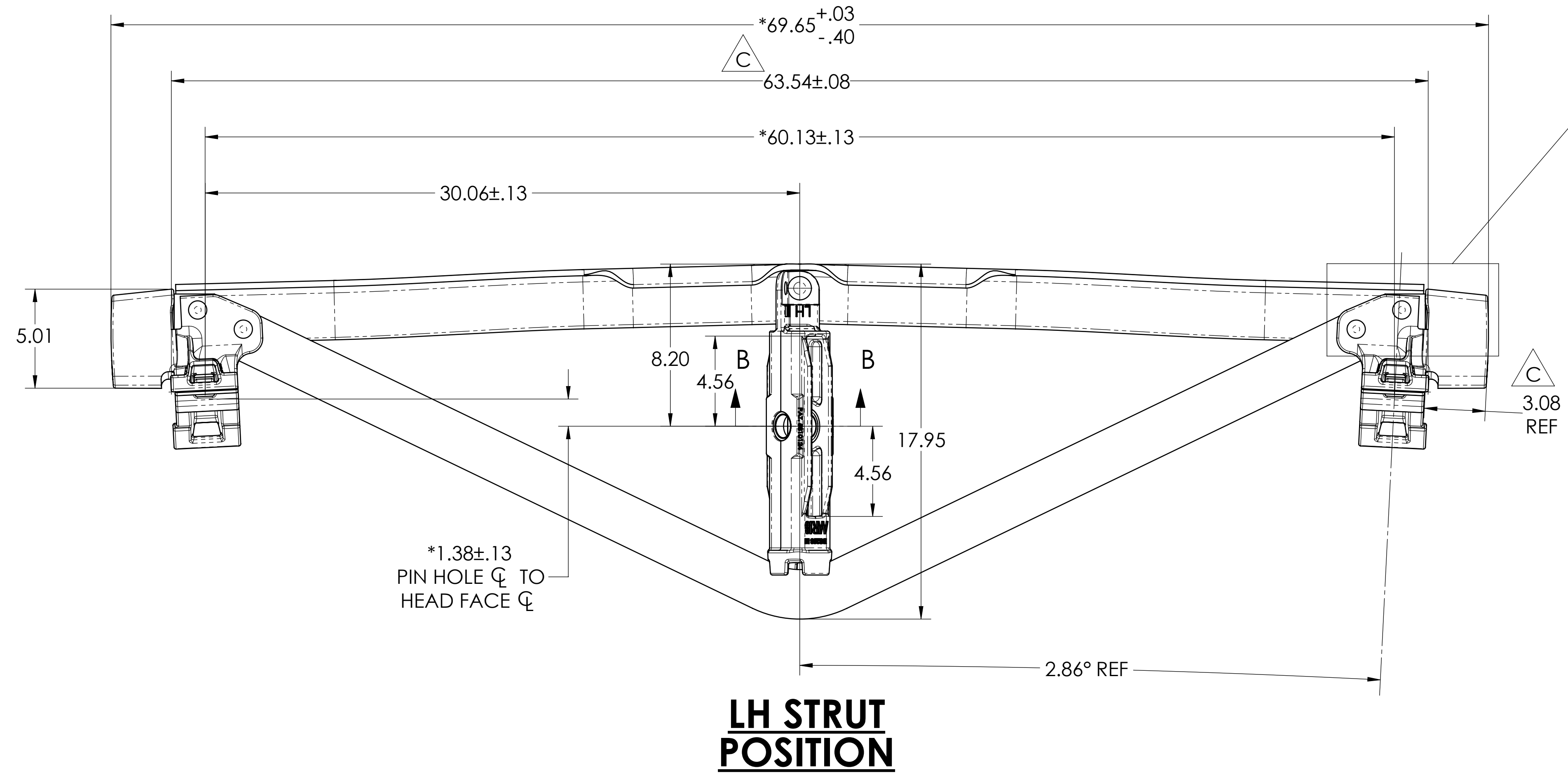
ZONE	REV	REVISIONS				
		DESCRIPTION	BY	CHKD BY	ECN	DATE
A		INITIAL RELEASE	-	-	-	-
A2, H12, J11	B	REMOVED PAINT SPEC E4450 FROM NOTES, ADDED P/N'S TO NOTES, UPDATED HUCK AND COLLAR P/N'S, REMOVED PATENT NUMBER.	RC	JC	2091	7/13/2021
A2, E4, F7	C	63.54 WAS 63.61, ADDED 3.08 REF, 103 Lbs. WAS 98.53 Lbs.	RC	JC	2106	9/9/2021

NOTES:

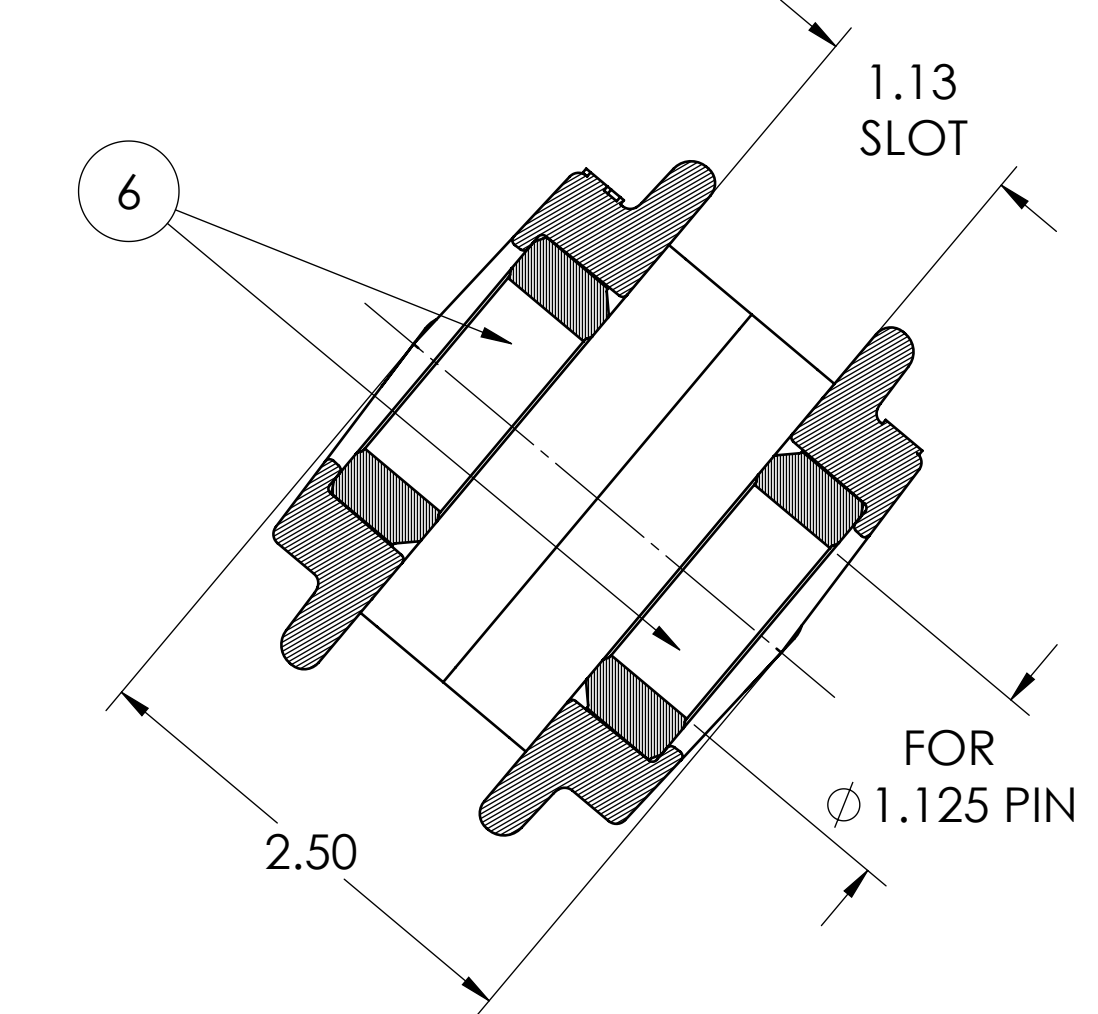
1. P/N'S: BB818LH - LEFT HAND, BB818RH - RIGHT HAND
2. * DENOTES A CRITICAL DIMENSION
3. FOR AAR REQUIREMENTS, REF SECTION E, S-344
4. BEAM SUPPLIED WITH (2) RIVETS PER BRAKE HEAD
5. MARKING: (CLEARLY LEGIBLE) .38 HIGH X .03 DEEP
090304066
S08
09 = YEAR (2 PLCS)
030 = JULIAN DATE (3 PLCS)
4066 = BEAM COUNT (4 PLCS)
S08 = DENOTES SERIES 2008



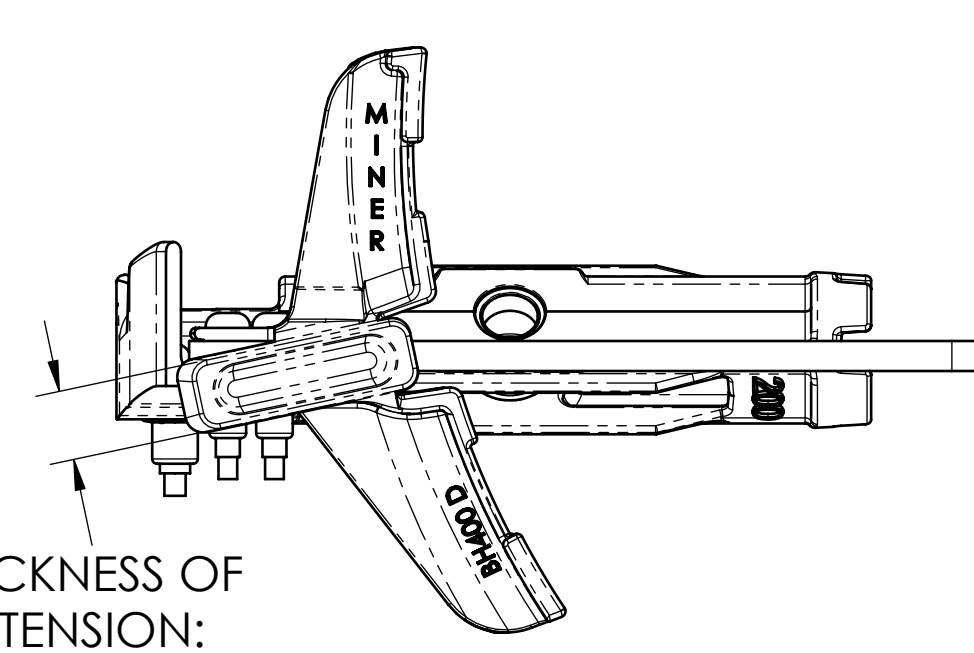
**DETAIL A
SCALE 1:1**



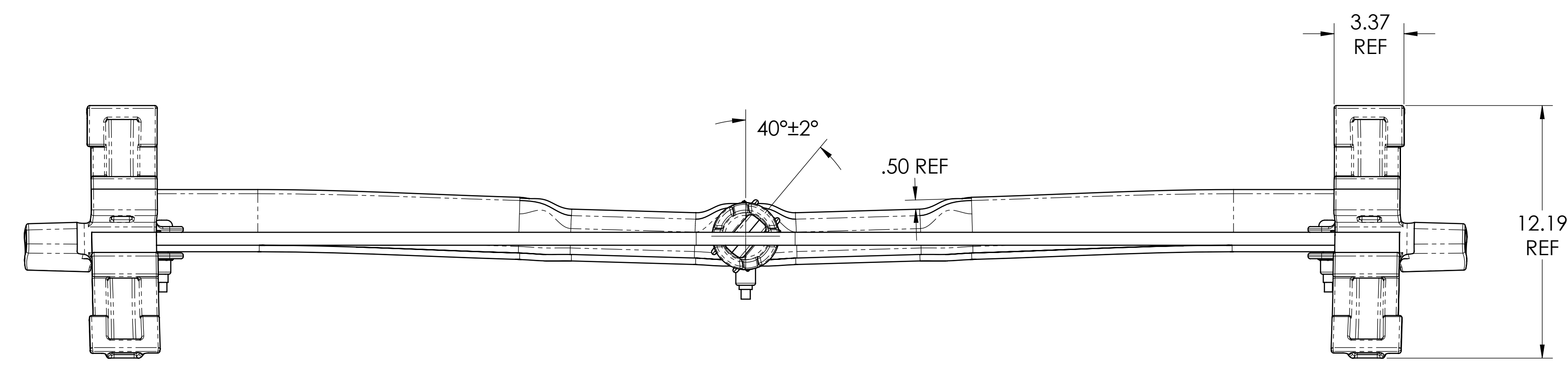
**RH STRUT
POSITION**



**SECTION B-B
SCALE 1:1**



REF THICKNESS OF
END EXTENSION:
1.347 MIN @ EDGE
1.411 MIN @ 1.00 FROM EDGE
1.547 MAX @ 3.034 FROM EDGE



THIS DRAWING IS THE PROPERTY
OF MINER ENTERPRISES INC.
WHO CLAIMS PROPRIETARY
RIGHTS IN THE MATERIAL.
DISCLOSED. IT IS ISSUED IN
CONFIDENCE FOR ENGINEERING
INFORMATION ONLY AND MAY
NOT BE COPIED OR USED FOR
MANUFACTURE OF ANYTHING
SHOWN WITHOUT PERMISSION
FROM MINER ENTERPRISES INC.
COPYRIGHT MINER ENTERPRISES, INC.

**RELEASED FOR
PRODUCTION**

UNLESS OTHERWISE SPECIFIED
TOLERANCES AS FOLLOWS
X.XX ± 0.06 ANGLES ± 1°
X.XXX ± 0.031 MM ± 1mm
(X.XX) CRITICAL / INSPECTION

MINER
1200 EAST STATE STREET GENEVA, IL 60134

TITLE: #18 UNIT BRAKE BEAM
AAR CERT. NO. 200

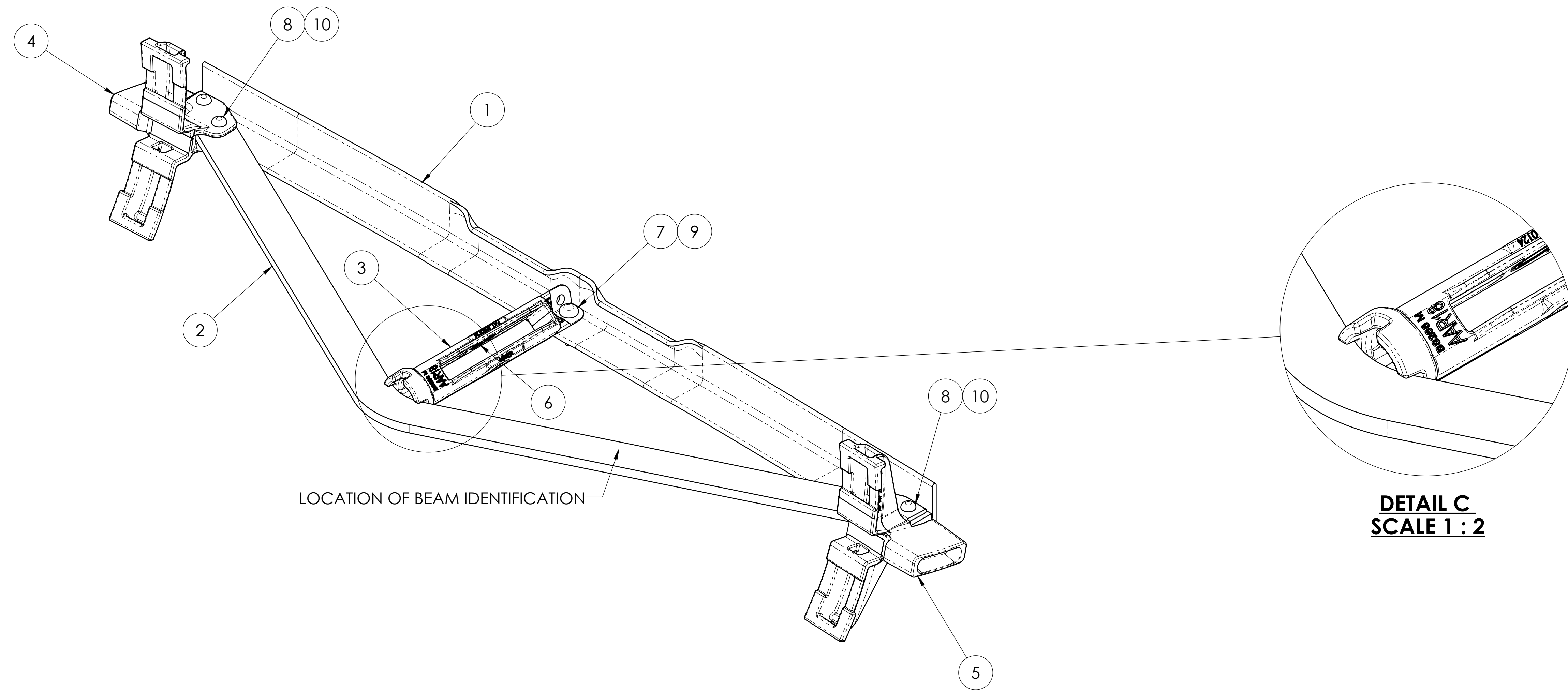
PRN: SEE NOTES MATERIAL: SEE BOM
WEIGHT: 103 Lbs.
DEVICE: BRAKE BEAM

REFERENCE: SCALE: 1:4
MODELER: RC DETAILED BY: RC APPROVED BY: JC DATE: 3/19/2009
DRAWING NO. REV.:

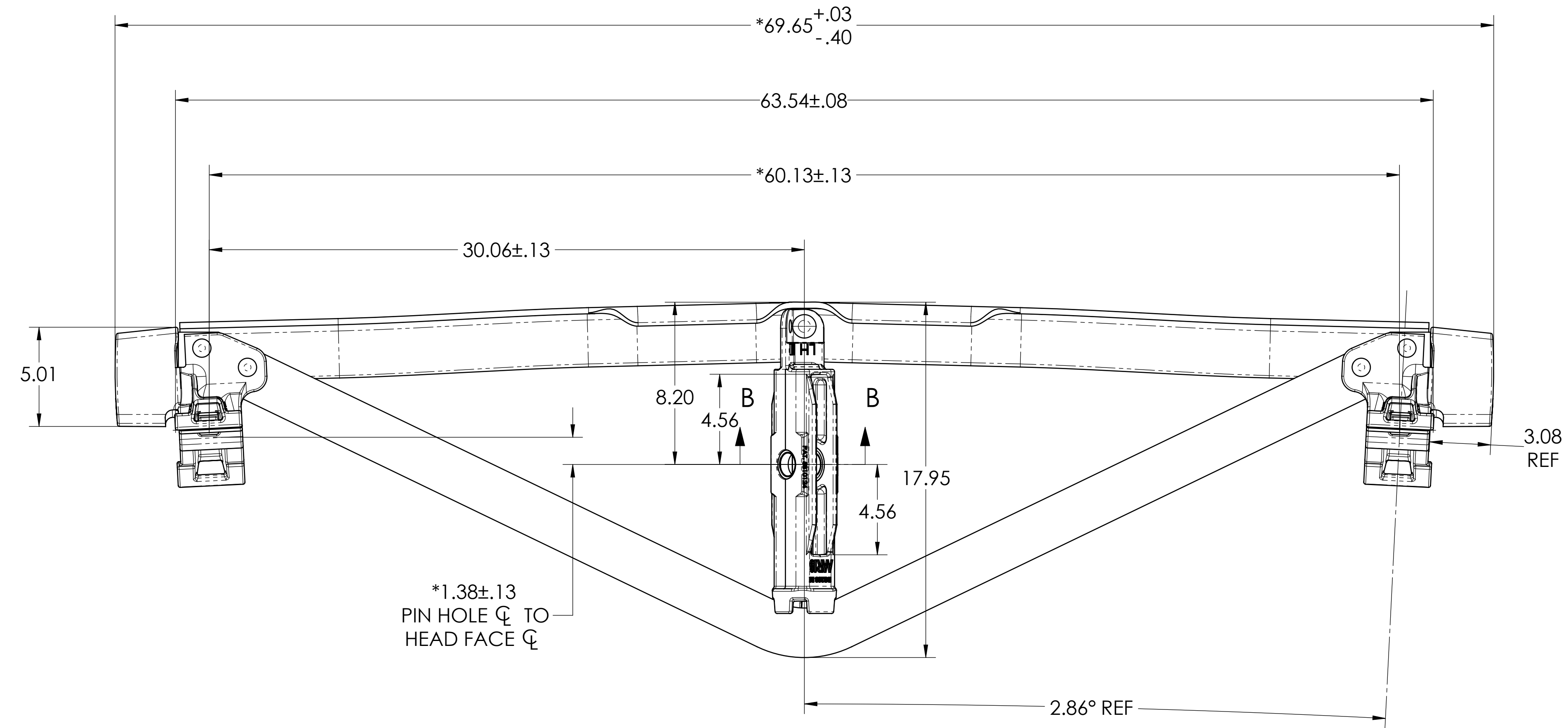
E BB818 **C**

ITEM	QTY	PART NUMBER	DESCRIPTION	DRAWING NUMBER
1	1	B3313	COMPRESSION MEMBER	B3313
2	1	B3236	TENSION BAR	B3236
3	1	BS268RM	#18/24 REVERSIBLE STRUT	BS267RM
4	1	BH400	UNIT BRAKE HEAD, FOR COMP SHOES	BH400
5	1	BH401	UNIT BRAKE HEAD, FOR COMP SHOES	BH401
6	2	BS370	BUSHING FOR #18 STRUT	BS370
7	1	BF2008	PIN, HUCK, 5/8"	BFC2
8	4	BF1624	PIN, HUCK, 1/2"	BFC1
9	1	BC0520	COLLAR, 5/8"	BFC2
10	4	BC0816	COLLAR, 1/2"	BFC1

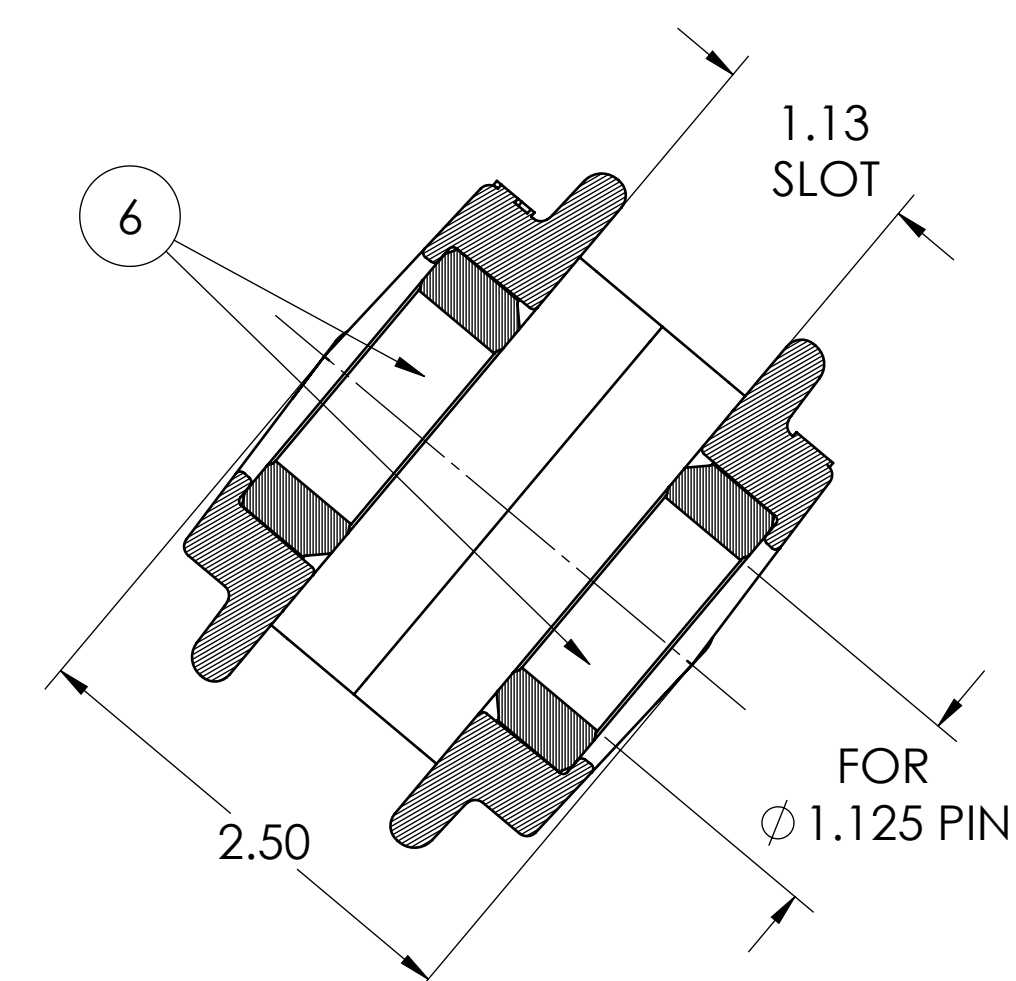
- NOTES:**
1. P/N'S: BB818LH - LEFT HAND, BB818RH - RIGHT HAND
2. * DENOTES A CRITICAL DIMENSION
3. MEETS AAR REQUIREMENTS, REF SECTION E, S-344
4. BEAM SUPPLIED WITH (2) RIVETS PER BRAKE HEAD
5. MARKING: (CLEARLY LEGIBLE) .38 HIGH X .03 DEEP
090304066
S08
09 = YEAR (2 PLCS)
030 = JULIAN DATE (3 PLCS)
4066 = BEAM COUNT (4 PLCS)
S08 = DENOTES SERIES 2008



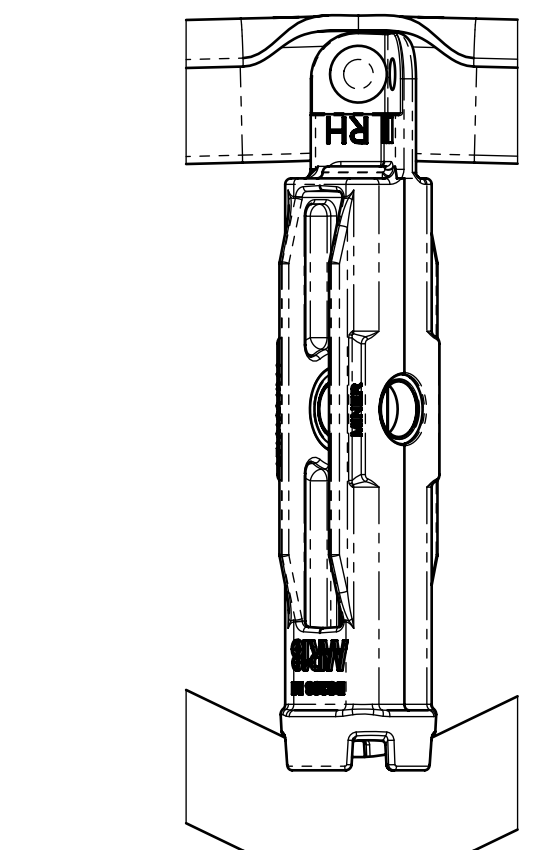
DETAIL C
SCALE 1 : 2



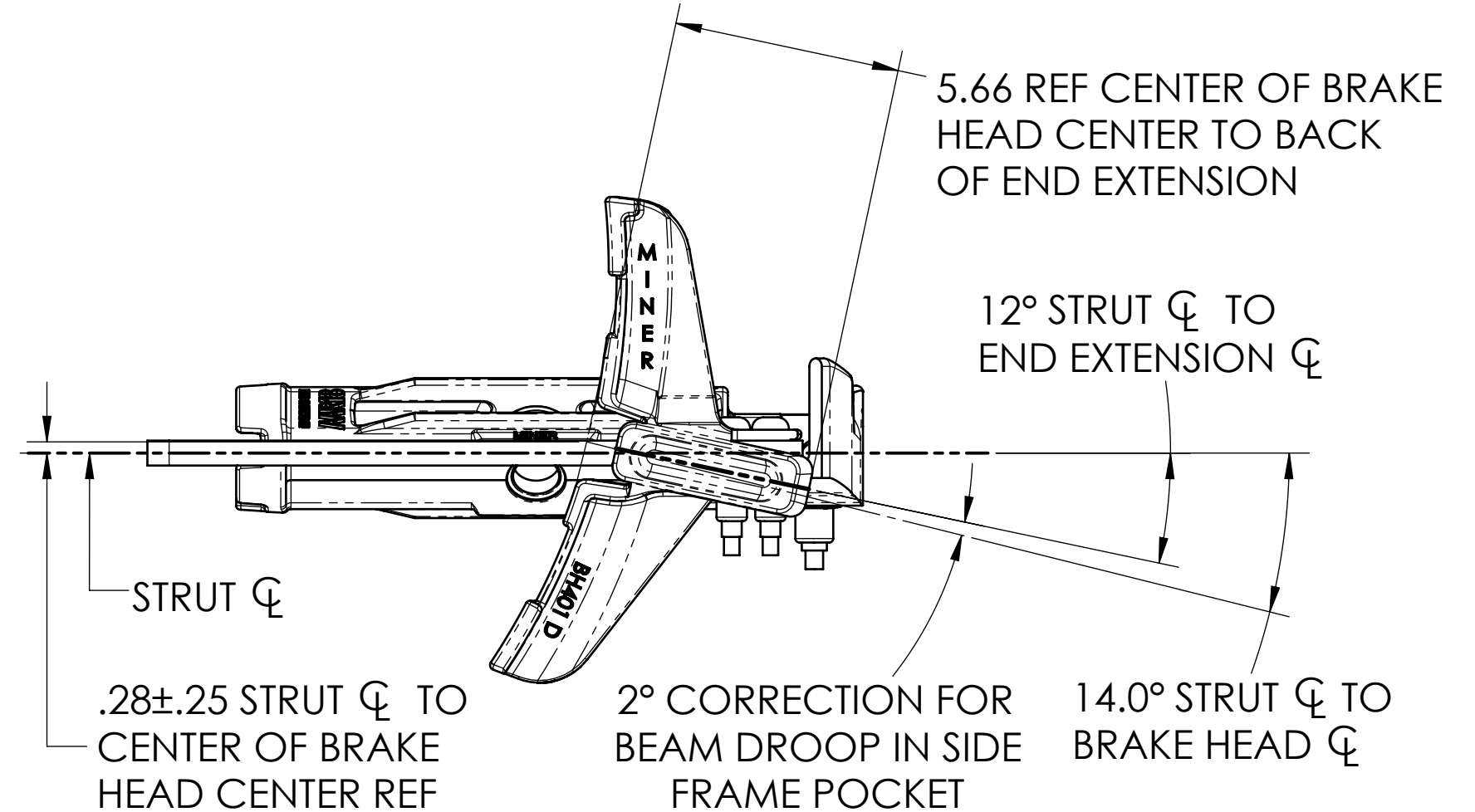
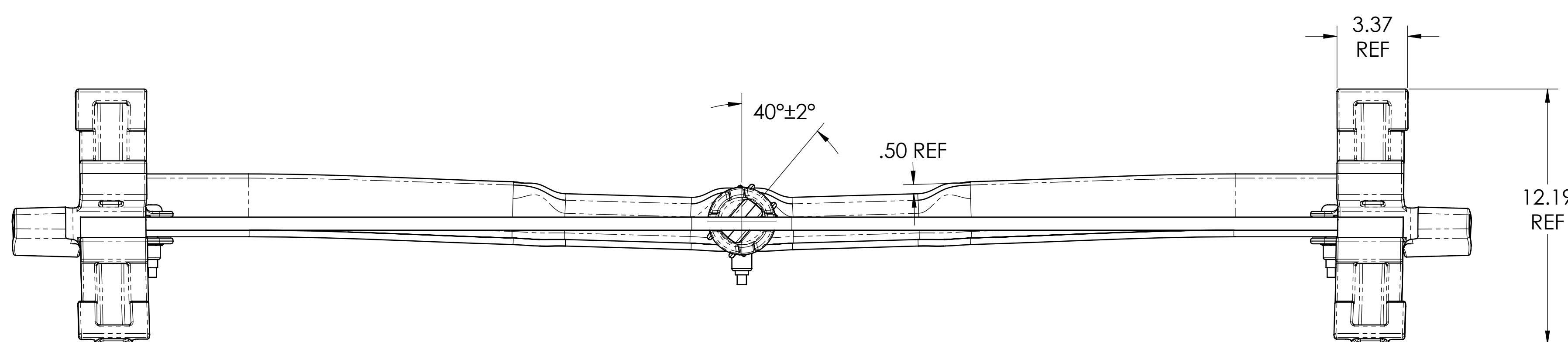
BB818LH STRUT POSITION



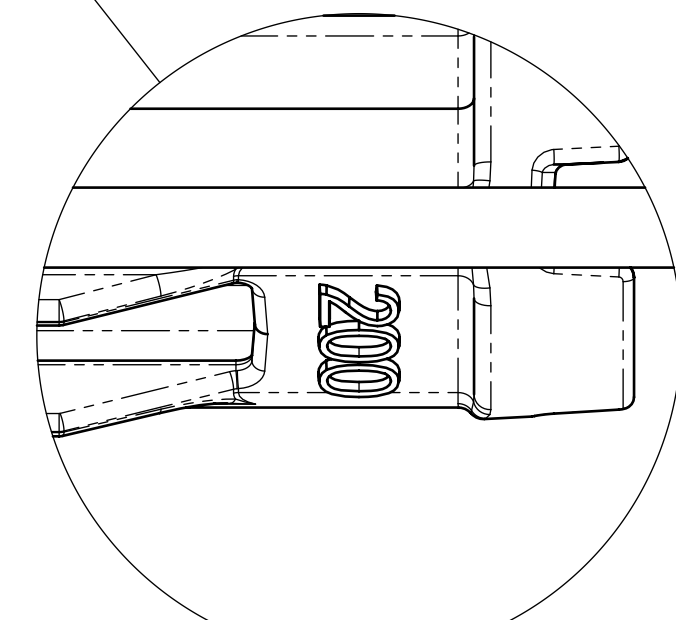
SECTION B-B
SCALE 1 : 1



BB818RH STRUT POSITION



REF THICKNESS OF END EXTENSION:
1.347 MIN @ EDGE
1.411 MIN @ 1.00 FROM EDGE
1.547 MAX @ 3.034 FROM EDGE



DETAIL D
SCALE 1 : 1.5

CUSTOMER DRAWING

THIS DRAWING IS THE PROPERTY OF MINER ENTERPRISES INC. WHO CLAIMS PROPRIETARY RIGHTS IN THE MATERIAL. DISCLOSED. IT IS ISSUED IN CONFIDENCE FOR ENGINEERING INFORMATION ONLY AND MAY NOT BE COPIED OR USED FOR MANUFACTURE OF ANYTHING SHOWN WITHOUT PERMISSION FROM MINER ENTERPRISES INC. COPYRIGHT MINER ENTERPRISES INC.

RELEASED FOR PRODUCTION

UNLESS OTHERWISE SPECIFIED TOLERANCES AS FOLLOWS
X.XX ± 0.06 ANGLES ± 1°
X.XXX ± 0.031 MM ± 1mm
(X.XXX) CRITICAL / INSPECTION

MINER
1200 EAST STATE STREET GENEVA, IL 60134

TITLE: #18 UNIT BRAKE BEAM
AAR CERT. NO. 200

PRN: SEE NOTES MATERIAL: SEE BOM
WEIGHT: 103 Lbs.
DEVICE: BRAKE BEAM

REFERENCE: SCALE: 1:4
DATE: 3/19/2009

DWG SIZE: DRAWING NO. BB818 REV. C