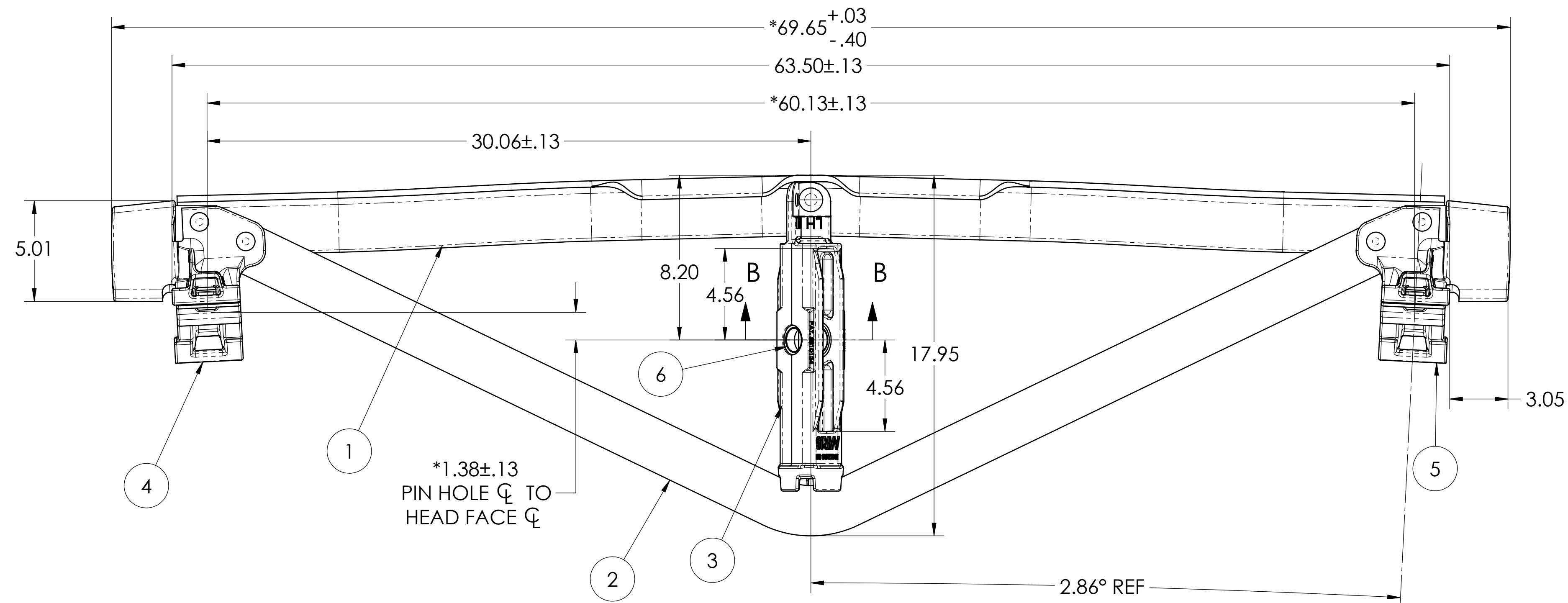
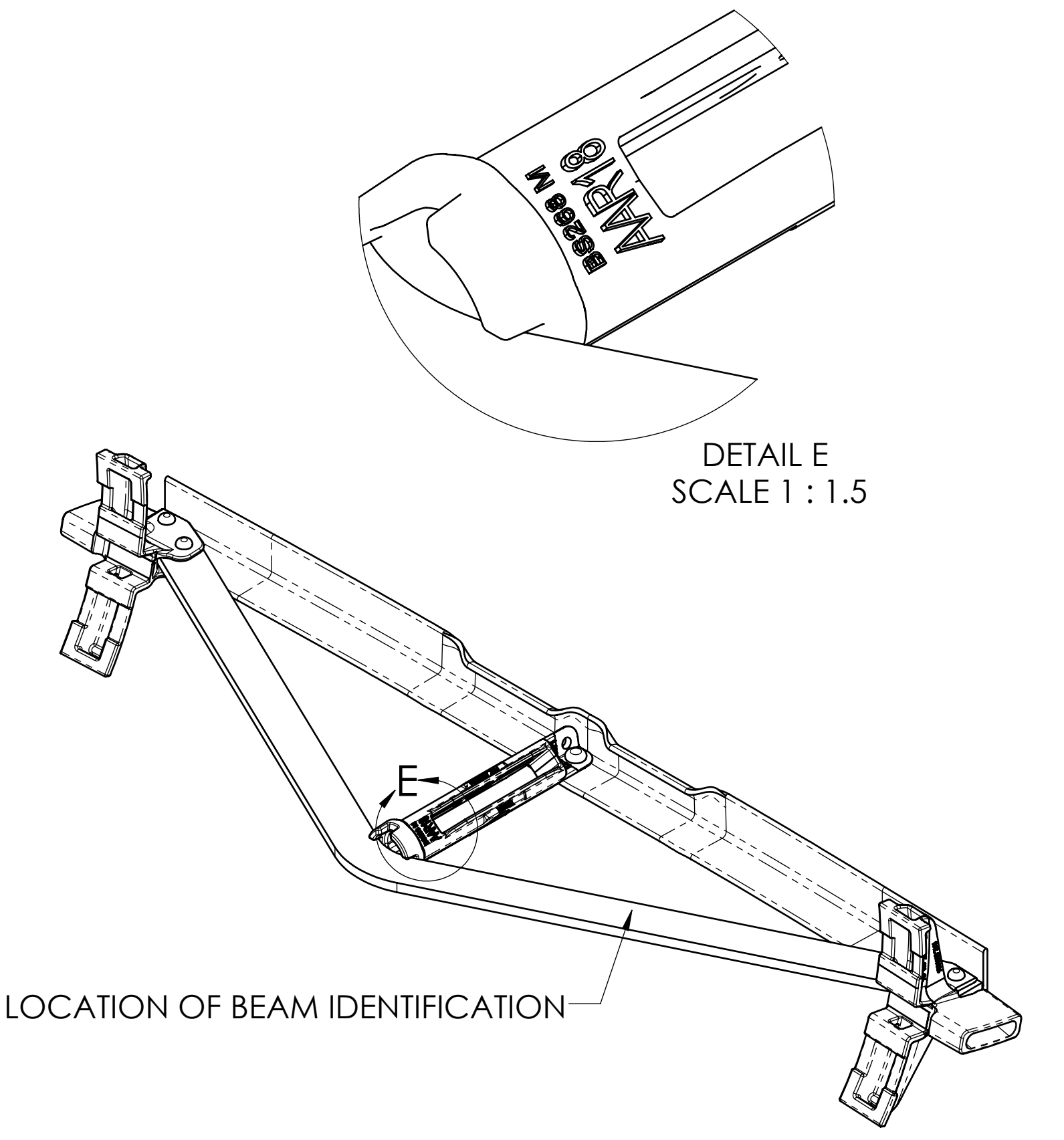


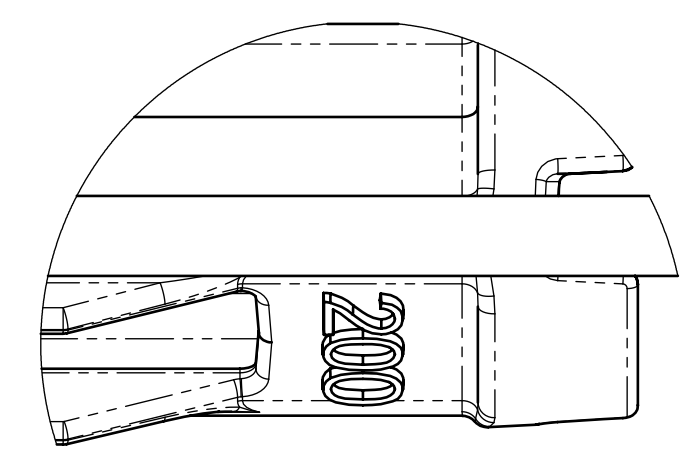
RH STRUT POSITION



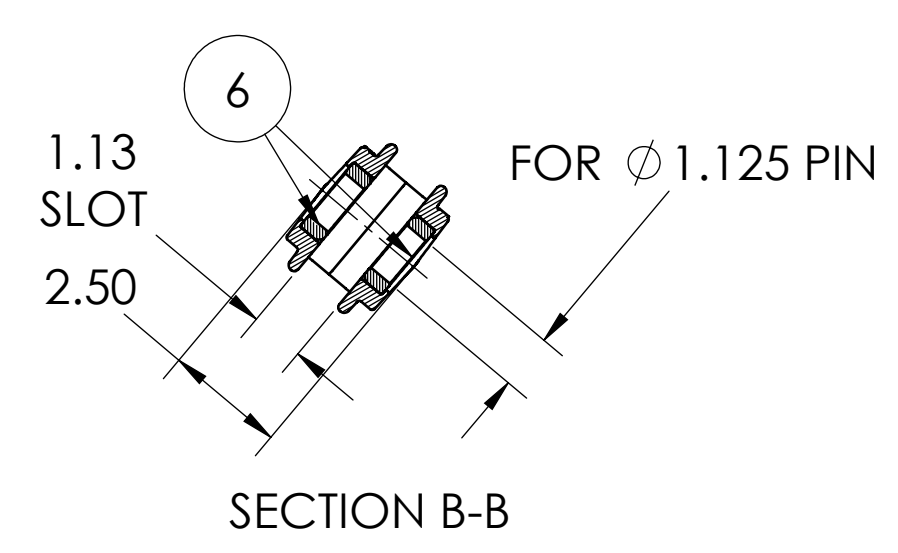
LH STRUT POSITION



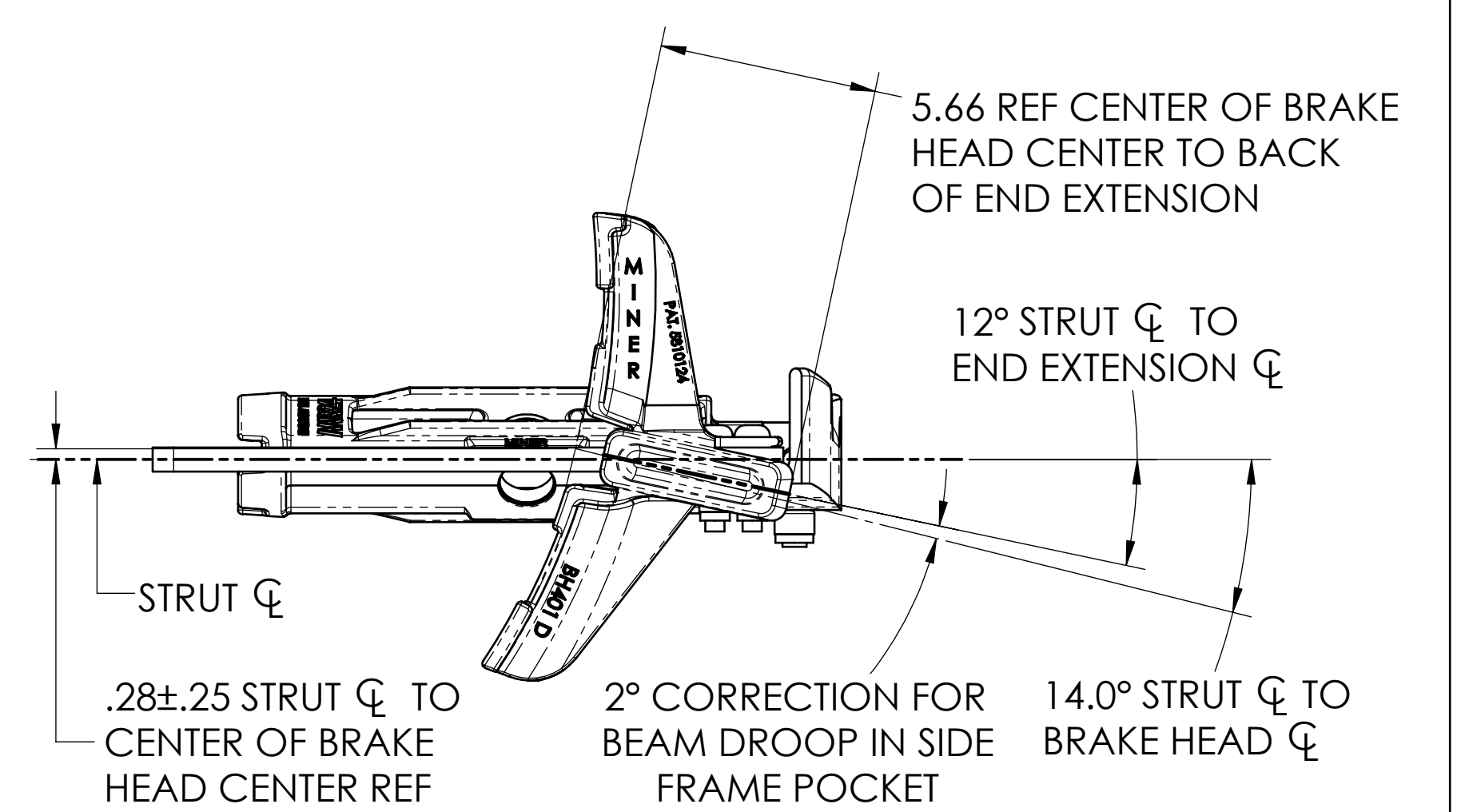
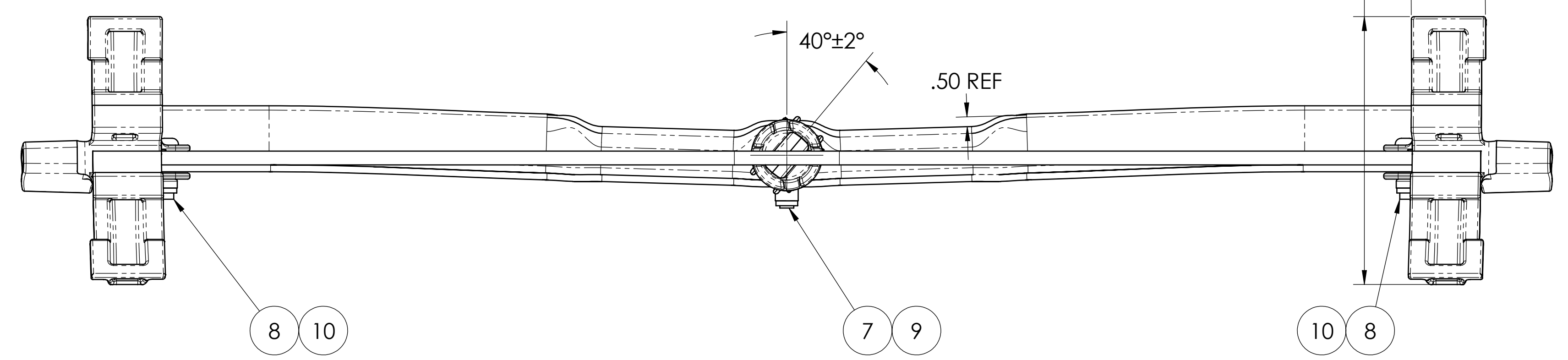
LOCATION OF BEAM IDENTIFICATION



DETAIL D SCALE 1:1.5



SECTION B-B



REF THICKNESS OF END EXTENSION:
 1.347 MIN @ EDGE
 1.411 MIN @ 1.00 FROM EDGE
 1.547 MAX @ 3.034 FROM EDGE

ITEM	QTY	PART NUMBER	DESCRIPTION	DRAWING NUMBER
1	1	B3313	COMPRESSION MEMBER	B3313
2	1	B3236	TENSION BAR	B3236
3	1	BS268RM	#18/24 REVERSIBLE STRUT	BS267RM
4	1	BH400	BRAKE HEAD, COMP SHOE, RH	BH400
5	1	BH401	BRAKE HEAD, COMP SHOE, LH	BH400
6	2	BS370	BUSHING FOR #18 STRUT	BS370
7	1	BF1213	PIN, 5/8" x 3-29/32"	F12
8	4	BF1210	PIN, 1/2" x 4-27/64"	F12
9	1	BF1403	5/8" COLLAR	F14
10	4	BF1402	1/2" COLLAR	F14

NOTES:
 1. * DENOTES A CRITICAL DIMENSION
 2. ASSEMBLY BEAM IS PAINTED PER SPEC E4450
 3. FOR AAR REQUIREMENTS, REF SECTION E, S-344
 4. BEAM SUPPLIED WITH (2) RIVETS PER BRAKE HEAD
 5. MARKING: (CLEARLY LEGIBLE) .38 HIGH X .03 DEEP
 090304066
 S08
 09 = YEAR (2 PLCS)
 030 = JULIAN DATE (3 PLCS)
 4066 = BEAM COUNT (4 PLCS)
 S08 = DENOTES SERIES 2008

THIS DRAWING IS THE PROPERTY OF MINER ENTERPRISES INC. WHO CLAIMS PROPRIETARY RIGHTS IN THE MATERIAL DISCLOSED. IT IS ISSUED IN CONFIDENCE FOR ENGINEERING INFORMATION ONLY AND MAY NOT BE COPIED OR USED FOR MANUFACTURE OF ANYTHING SHOWN WITHOUT SPECIFIC WRITTEN PERMISSION FROM MINER ENTERPRISES INC. COPYRIGHT MINER ENTERPRISES, INC. 2007.

PATENTED
5,810,124

DIMENSIONAL TOLERANCES
 ALL DIMENSIONS IN INCHES UNLESS OTHERWISE SPECIFIED
 UNLESS OTHERWISE SPECIFIED: TOLERANCES ARE NOT ACCUMULATIVE
 2 PL. DEC.: ±0.06
 3 PL. DEC.: ±0.031
 ANGLES: ±1°
 MILLIMETERS: ±0.13
 MM 1 PL. DEC.: ±

MINER ENTERPRISES INC.
 W. H. MINER DIVISION
 1200 EAST STATE STREET GENEVA, IL 60134

TITLE: #18 UNIT BRAKE BEAM
 AAR CERT. NO. 200 FOR COMP. SHOE

PART: SEE LIST
 WEIGHT: 103

DATE: 3/19/09
 BY: JC
 CHECKED: RMC
 SCALE: 1:4
 PART/CAT NO.: BB818
 REV: A