

Type "F"

Door Operating Mechanism

Quick unloading and turnaround with Miner's Type "F" mechanism

The Type "F" door operating mechanism is specifically designed to provide fast, reliable discharge of wood chips from open top hopper cars.

With simple, safe door operation and large, unobstructed door openings, the Type "F" provides quick unloading and turnaround for optimum equipment utilization. Designed for easy, safe operation, one man can easily operate doors in pairs from either side of the car.

Built with only the most reliable, high quality materials, the Type "F" utilizes a positive over center lock arrangement to assure doors stay locked in transit. Simple door adjustments are possible on the Type "F" to ensure a tight seal throughout the lifetime of the mechanism.

Type "F" door operating mechanisms can be designed for either new or existing cars.



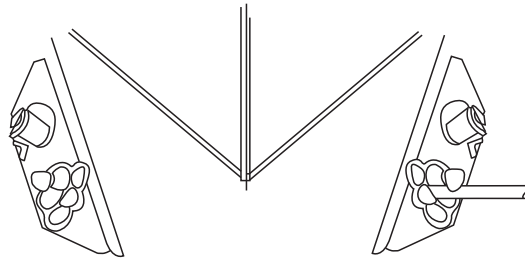
FEATURES

- Easy, safe one person opening and closing from the side of the car
- Large, unobstructed door openings
- Fast unloading and turnaround
- Positive over center lock
- Tight seal to prevent commodity leakage
- Safe operation from the side of the car

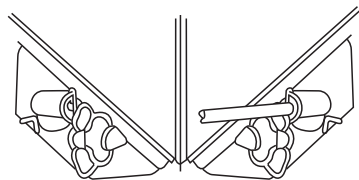
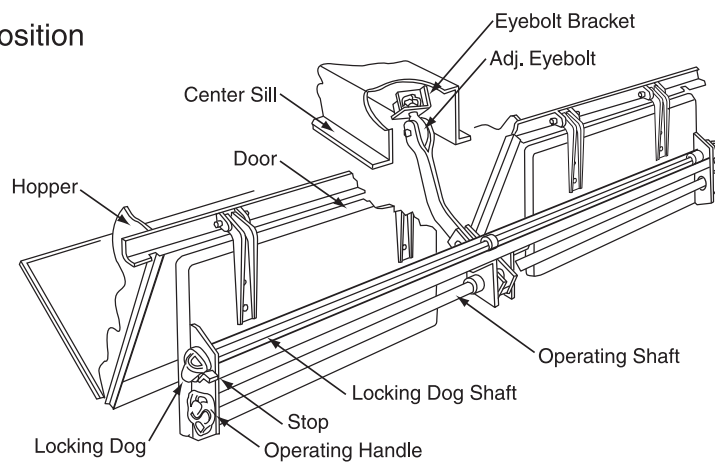


W. H. MINER DIVISION

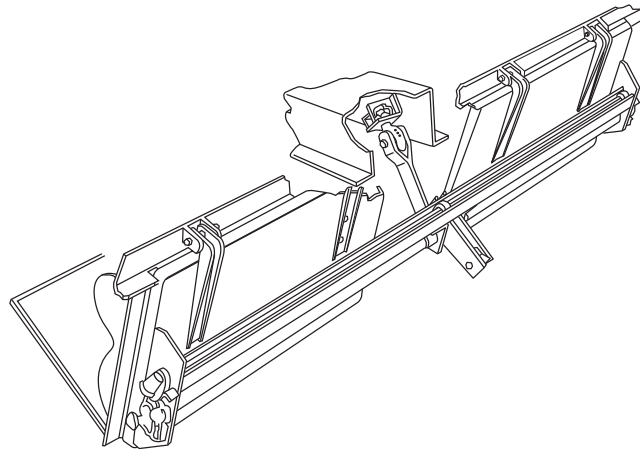
Type "F" Door Operating Mechanism



Open Position



Closed Position



100 Years of Engineered Excellence
Miner Discharge Systems
Reliable • Innovative • Versatile

Perfecting Railcar Performance



W. H. MINER DIVISION
1200 East State Street, P.O. Box 471, Geneva, IL 60134
1-630/232-3000 • FAX 1-630/232-3055
www.minerent.com