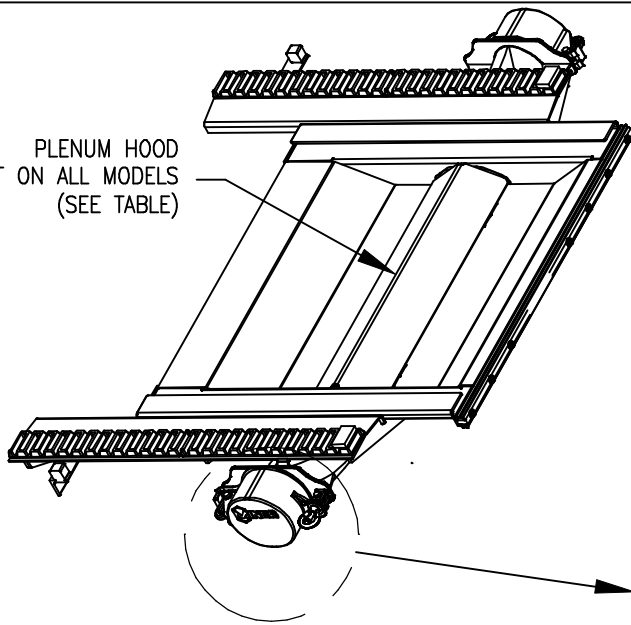




1200 EAST STATE STREET GENEVA, IL 60134

PLENUM HOOD
NOT ON ALL MODELS
(SEE TABLE)



27 x 30 SaniLOK Plenum Chamber
See Table For P/N

P30000431 SWING BOLT
P30000436 EYE NUT
P30000435 WASHER
P30000437 BOLT
P30000412 NYLOCK NUT

MKE10241 CAP
MKE10242 GASKET

P30000437 BOLT
P30000410 WASHER
P30000434 WELD NUT

PLENUM NUMBER	FRAME MAT'L	PLENUM HOOD
MKE10407	SS	Y
MKE10408	SS	N

HARDWARE FOR CAP



FLAT WASHER
P30000410
(1/CAP, 2/PLENUM)
3/8"



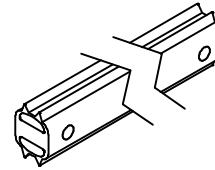
FLAT WASHER
P30000435
(1/CAP, 2/PLENUM) 3/8"
X 1-1/2"



WELD NUT
P30000434
(1/CAP,
2/PLENUM)
3/8-16

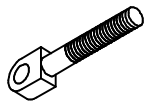


NYLOCK NUT
P30000412
(1/CAP,
2/PLENUM)
3/8-16

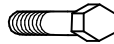


HARDWARE REQUIRED
(9 EACH):
P10209003 SLEEVE
P30000228 BOLT
P30000203 LOCK NUT
P90000209 WASHER

PLENUM FRONT SEAL -
MKE10248-3,
(1/PLENUM)
9 HOLES, 38-1/4" LONG



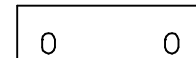
SWING BOLT
P30000431
(1/CAP, 2/PLENUM)
3/8-16



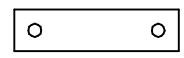
BOLT
P30000437
(2/CAP, 4/PLENUM)
3/8-16 X 1-3/4"



EYE NUT
P30000436
(1/CAP, 2/PLENUM)
3/8-16

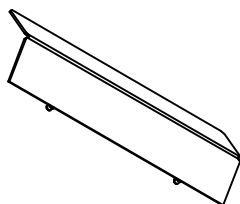


REAR PLENUM SEAL
P10268003
(2/PLENUM)
4-1/2" LONG

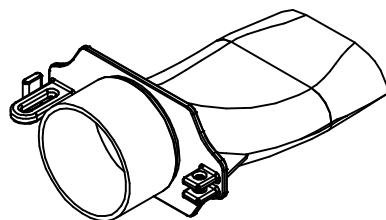


REAR SEAL BRACKET
P10268004Z
(2/PLENUM)
4" LONG

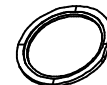
HARDWARE REQUIRED
(2 EACH/SEAL):
P30000208 BOLT
P30000203 LOCK NUT



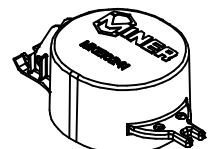
PLENUM HOOD ASS'Y
W/HINGES
P10245010
(1/PLENUM)



PLENUM TUBE
MKE10240
(2/PLENUM)



GASKET
MKE10242
(2/PLENUM)



PIVOT CAP
MKE10241
(2/PLENUM)